

RESERVE ENTRANCEWAY SIGNAGE

RESERVE ENTRANCEWAY SIGNAGE.....	1
1. INTRODUCTION.....	5
2. RESERVE CATALOGUE.....	6
2.1. Adah Reserve, Totara Vale.....	6
2.2. Aeroview Drive Esplanade Reserve, Beach Haven.....	8
2.3. A F Thomas Park, Wairau Valley.....	9
2.4. Agincourt Reserve, Glenfield.....	11
2.5. Akoranga Reserve (Onewa Domain), Northcote.....	12
2.6. Amelia Place Esplanade Reserve, Beach Haven.....	13
2.7. Anne McLean Reserve, Bayview.....	14
2.8. Arcadia Reserve, Bayview.....	15
2.9. Ayton Reserve, Totara Vale.....	18
2.10. Beach Haven Plaza, Beach Haven.....	19
2.11. Birkenhead Domain, Birkenhead.....	20
2.12. Birkenhead War Memorial Park, Birkenhead.....	22
2.13. Bonito Scenic Reserve, Bayview.....	25
2.14. Brassey Road Reserve, Birkenhead.....	26
2.15. Cadness Loop, Northcote.....	27
2.16. Cadness Reserve, Northcote.....	28
2.17. Camelot Reserve, Glenfield.....	29
2.18. Castleton-Reid Scenic Reserve, Birkenhead.....	31
2.19. Cecil Eady Bush, Northcote.....	32
2.20. Celeste Reserve, Totara Vale.....	36
2.21. Chatswood Reserve, Chatswood.....	38
2.22. Chealsea Estate Heritage Park, Birkenhead / Chatswood.....	42
2.23. City View Terrace Reserve, Birkenhead.....	44
2.24. Cobblestone Lane, Hillcrest.....	46
2.25. Colonial Corner, Birkenhead.....	47
2.26. Cresta Avenue Esplanade Reserve, Beach Haven.....	48
2.27. Debbie Chamberlain Reserve, Hillcrest.....	49
2.28. Diana Reserve, Glenfield.....	50
2.29. Downing Street Domain, Glenfield.....	51
2.30. Drome View Place Reserve, Beach Haven.....	52
2.31. Dudding Avenue Reserve, Northcote.....	53
2.32. Elliott Avenue Reserve, Bayview.....	54
2.33. Embassy Reserve, Glenfield.....	56
2.34. Eskdale Reserve, Birkdale / Birkenhead / Glenfield.....	57
2.35. Fernglen Native Plant Gardens, Birkenhead.....	60
2.36. Fernwood Grove, Bayview.....	61
2.37. Fishermans Wharf, Northcote Point.....	62
2.38. Fowler Reserve, Northcote.....	63
2.39. Francis Kendall Reserve, Glenfield.....	64
2.40. Fred Anderson Reserve, Beach Haven.....	66
2.41. Glencourt Reserve, Glenfield.....	67
2.42. Glendhu Scenic Reserve, Glenfield.....	68
2.43. Glenfield Cemetery, Birkenhead.....	71

2.44.	Glenfield Hall and Domain, Glenfield	72
2.45.	Gold Hole, Northcote Point	73
2.46.	Greenslade Reserve, Northcote	74
2.47.	Greenvally Accessway, Glenfield.....	75
2.48.	Greenvally Reserve, Glenfield	76
2.49.	Gretel Scenic Reserve, Hillcrest	77
2.50.	Hadfield Street Reserve, Beach Haven	78
2.51.	Halls Beach, Northcote Point	80
2.52.	Heath Reserve, Northcote	81
2.53.	Hellyers Creek Reserve, Beach Haven / Birkdale	82
2.54.	Highgrove Reserve, Totara Vale.....	84
2.55.	Hilders Park, Beach Haven.....	85
2.56.	Hinemoa Park, Birkenhead.....	86
2.57.	Hiwihau Reserve, Glenfield.....	88
2.58.	Holland Reserve, Hillcrest.....	89
2.59.	Holyoake Place Reserve, Birkenhead	91
2.60.	Homewood Reserve, Chatswood	92
2.61.	Inwards Reserve, Birkdale	93
2.62.	Island Bay Reserve, Beach Haven	95
2.63.	Jacaranda Avenue Esplanade Reserve, Beach Haven	96
2.64.	Jacaranda Avenue Reserve, Beach Haven	98
2.65.	Jean Sampson Reserve, Northcote Point.....	99
2.66.	John Kay Park, Birkenhead	100
2.67.	Kahika Point Reserve, Birkdale	101
2.68.	Kaipatiki Esplanade Reserve, Bayview.....	102
2.69.	Kaipatiki Creek Reserve, Glenfield	104
2.70.	Kaipatiki Park, Glenfield.....	105
2.71.	Kaka Street Reserve, Northcote	106
2.72.	Kauri Glen Reserve, Northcote	108
2.73.	Kauri Park, Birkenhead / Beach Haven	110
2.74.	Kauri Park Extn, Birkenhead.....	112
2.75.	Kauri Point Centennial Park, Chatswood.....	113
2.76.	Kauri Point Domain, Chatswood	114
2.77.	Keith Smith Avenue Reserve, Beach Haven	115
2.78.	Kelmar Scenic Reserve, Glenfield	116
2.79.	King Street Reserve, Northcote Point	117
2.80.	Kitewao Street Esplanade Reserve, Northcote.....	118
2.81.	Lancelot Reserve, Glenfield.....	119
2.82.	Lauderdale Reserve, Birkenhead	120
2.83.	Leiden Reserve, Totara Vale	121
2.84.	Leigh Scenic Reserve, Bayview.....	122
2.85.	Lenihan Reserve, Northcote	125
2.86.	Le Roys Bush Reserve, Birkenhead / Northcote	126
2.87.	Lindisfarne, Northcote.....	128
2.88.	Linley Reserve, Hillcrest	129
2.89.	Little Shoal Bay Reserve, Birkenhead / Northcote / Northcote Point	130
2.90.	Little Shoal Bay Foreshore Reserve, Birkenhead / Northcote Point	133
2.91.	Locket Reserve, Glenfield.....	134
2.92.	Lynn Reserve, Bayview	135
2.93.	Lysander Crescent Reserve, Beach Haven.....	137
2.94.	Manuka Reserve, Bayview	138

2.95.	Manuka Neighbourhood Reserve, Bayview	140
2.96.	Marlborough Park, Glenfield	141
2.97.	Mick Stanley Memorial Reserve, Chatswood	143
2.98.	McFetridge Park, Hillcrest.....	144
2.99.	Monarch Park, Hillcrest.....	145
2.100.	Motorway Buffer Reserve, Northcote	146
2.101.	Muriel Fisher Reserve, Beach Haven	147
2.102.	Neal Reserve, Glenfield	149
2.103.	Nell Fisher Reserve, Birkenhead	150
2.104.	Needles Eye, Birkenhead	151
2.105.	Neptune Avenue Reserve, Beach Haven	152
2.106.	Nikau Reserve, Bayview	153
2.107.	Normanton Reserve, Glenfield.....	154
2.108.	Odin Place Reserve, Beach Haven	155
2.109.	Onepoto Domain, Northcote	157
2.110.	Onewa Domain, Northcote.....	159
2.111.	Oruamo Domain, Glenfield	161
2.112.	Oruamo Place Esplanade Reserve, Beach Haven	162
2.113.	Park Reserve, Glenfield	163
2.114.	Park Hill Reserve, Birkdale	164
2.115.	Park Hill South Reserve, Birkdale.....	166
2.116.	Pemberton Reserve, Bayview.....	167
2.117.	Plantation Reserve, Beach Haven	169
2.118.	Portsea Reserve, Chatswood	170
2.119.	Powrie Reserve, Glenfield	171
2.120.	Raleigh Road Reserve, Northcote	172
2.121.	Rangatira Reserve, Beach Haven, Birkdale	173
2.122.	Rawene Road Reserve, Birkenhead.....	177
2.123.	Rewi Alley Reserve, Totara Vale	178
2.124.	Ridgewood Reserve, Birkenhead	180
2.125.	Rosecamp Road Foreshore Reserve, Beach Haven.....	181
2.126.	Ross Reserve, Glenfield	182
2.127.	Rotary Grove, Northcote	183
2.128.	Sapphire Reserve, Bayview	185
2.129.	Shepherds Park, Beach Haven.....	186
2.130.	Sispara Place Reserve, Beach Haven.....	188
2.131.	Smiths Bush Scenic Reserve, Northcote	189
2.132.	Soldiers Bay Reserve, Beach Haven.....	191
2.133.	Spinella Reserve, Bayview	193
2.134.	Stafford Park, Northcote Point	194
2.135.	Stanaway Reserve, Hillcrest.....	195
2.136.	Stancich Reserve, Hillcrest.....	196
2.137.	Standish Reserve, Bayview	198
2.138.	Stokes Point / Te Onewa Reserve, Northcote Point	199
2.139.	Sulphur Beach Reserve, Northcote Point	200
2.140.	Sunnybrae Green, Hillcrest.....	201
2.141.	Sunnyhaven Avenue Reserve, Beach Haven	202
2.142.	Tamahere Reserve, Glenfield.....	203
2.143.	Target Reserve, Totara Vale.....	205
2.144.	Taurus Crescent Reserve, Beach Haven	207
2.145.	Telephone Road, Birkenhead	208

2.146.	Tenbless Reserve, Totara Vale	210
2.147.	Teviot Reserve, Totara Vale	211
2.148.	Totaravale East Reserve, Totara Vale	212
2.149.	Tree View Reserve, Glenfield	213
2.150.	Trelawny Reserve, Hillcrest	214
2.151.	Trias Reserve, Totara Vale	216
2.152.	Tui Park, Beach Haven	217
2.153.	Tuff Crater, Northcote	218
2.154.	Vandeleur Reserve, Birkdale	220
2.155.	Verran Road Esplanade Reserve, Birkenhead	221
2.156.	Verran Road Gully Reserve, Birkenhead.....	222
2.157.	Waimana Avenue Foreshore, Northcote Point	224
2.158.	Wanita Reserve, Totara Vale	225
2.159.	Windy Ridge Reserve, Glenfield	226
2.160.	Witheford Scenic Reserve, Bayview	227
2.161.	Woodcote Scenic Reserve, Glenfield	229
2.162.	Zion Hill Reserve, Birkenhead	230
3.	UNIDENTIFIED RESERVES.....	231

1. INTRODUCTION

The purpose of this report is to record a list of all entrances to reserves and whether they have adequate signage identifying the reserve.

I believe that all public reserve land should be identifiable and accessible to the public.

I discovered that many entrances to our reserves do not have signage and may only be known to direct neighbours. Many are inaccessible, appearing to be private property. In some cases, neighbours have encroached onto reserve land, blocking public entranceways. Some reserves do not have any signage at any of their entrances.

Anomalies

While conducting this research, I discovered a large number of anomalies with the GIS data, including:

- a) **Incorrect Boundaries:** Many reserve boundaries as identified on GIS do not conform to the boundaries specified in their reserve management plans (taking into account expansions since the plans were developed); some parcels of land are identified as belonging to one reserve when they actually belong to another; some portions of reserve land are identified as part of road reserve when they are not.
- b) **Incorrect Naming:** Several reserves are incorrectly named on GIS when compared to the respective reserve management plan and/or their listing in the New Zealand Gazette. This has led to some reserve signage also incorrectly naming the reserve.

Methodology

For this research, I used the following sources to identify and cross-check the boundaries and entrances of each reserve in the Kaipatiki Local Board area:

- ▶ Auckland Council GIS Viewer (<http://maps.aucklandcouncil.govt.nz/aucklandcouncilviewer/>)
- ▶ Reserve management plans
- ▶ Site visits
- ▶ Google Maps Street View (<https://www.google.co.nz/maps/>)
- ▶ New Zealand Gazette (<https://gazette.govt.nz/>)
- ▶ NZ Post (for identifying suburbs)
- ▶ Local knowledge

Stormwater ponds were not included in this report, unless specified as part of a reserve by a reserve management plan.

Reserve land vested in WaterCare during the amalgamation of Auckland has not been included in this report, unless specified as part of a reserve by a reserve management plan.

2. RESERVE CATALOGUE

2.1. ADAH RESERVE, TOTARA VALE



Park Name (official):	Adah Reserve					
Reserve Management Plan:	No reserve management plan					
Entrance	Auckland Council sign	North Shore City sign	Pre-North Shore City sign	Inadequate signage	No signage	Notes
Sunset Road					✓	
Finn Place					✓	Not an obvious entrance. See photo below.
Jenanne Place					✓	
Odette Road					✓	
Other Notes:						



Finn Place entranceway – Not an obvious entrance as appears to be private property. Part of grass area and bottom third of driveway is on reserve land.

2.2. AEROVIEW DRIVE ESPLANADE RESERVE, BEACH HAVEN



Park Name (official):	Aeroview Drive Esplanade Reserve					
Reserve Management Plan:	Foreshore/Esplanade Reserves, 10 October 1989					
Entrance	Auckland Council sign	North Shore City sign	Pre-North Shore City sign	Inadequate signage	No signage	Notes
Aeroview Drive					✓	No entrance signage, just a “no dog-poo” sign. See photos below.
Other Notes:						



Aeroview Drive entranceway - No entrance signage, just a “no dog-poo” sign.

2.3. A F THOMAS PARK, WAIRAU VALLEY



Park Name (official):	A F Thomas Park					
Reserve Management Plan:	A F Thomas Park, November 1991					
Entrance	Auckland Council sign	North Shore City sign	Pre-North Shore City sign	Inadequate signage	No signage	Notes
Cherry Lane					✓	
Goldfield					✓	
Silverfield				✓		North Shore Events sign, but no A F Thomas Reserve sign
Argus Place				✓		North Shore Events sign, but no A F Thomas Reserve sign

Entrance	Auckland Council sign	North Shore City sign	Pre-North Shore City sign	Inadequate signage	No signage	Notes
Terrylyn Place					✓	
Jessmae Place					✓	
Northcote Road		✓				
Other Notes:						

2.4. AGINCOURT RESERVE, GLENFIELD



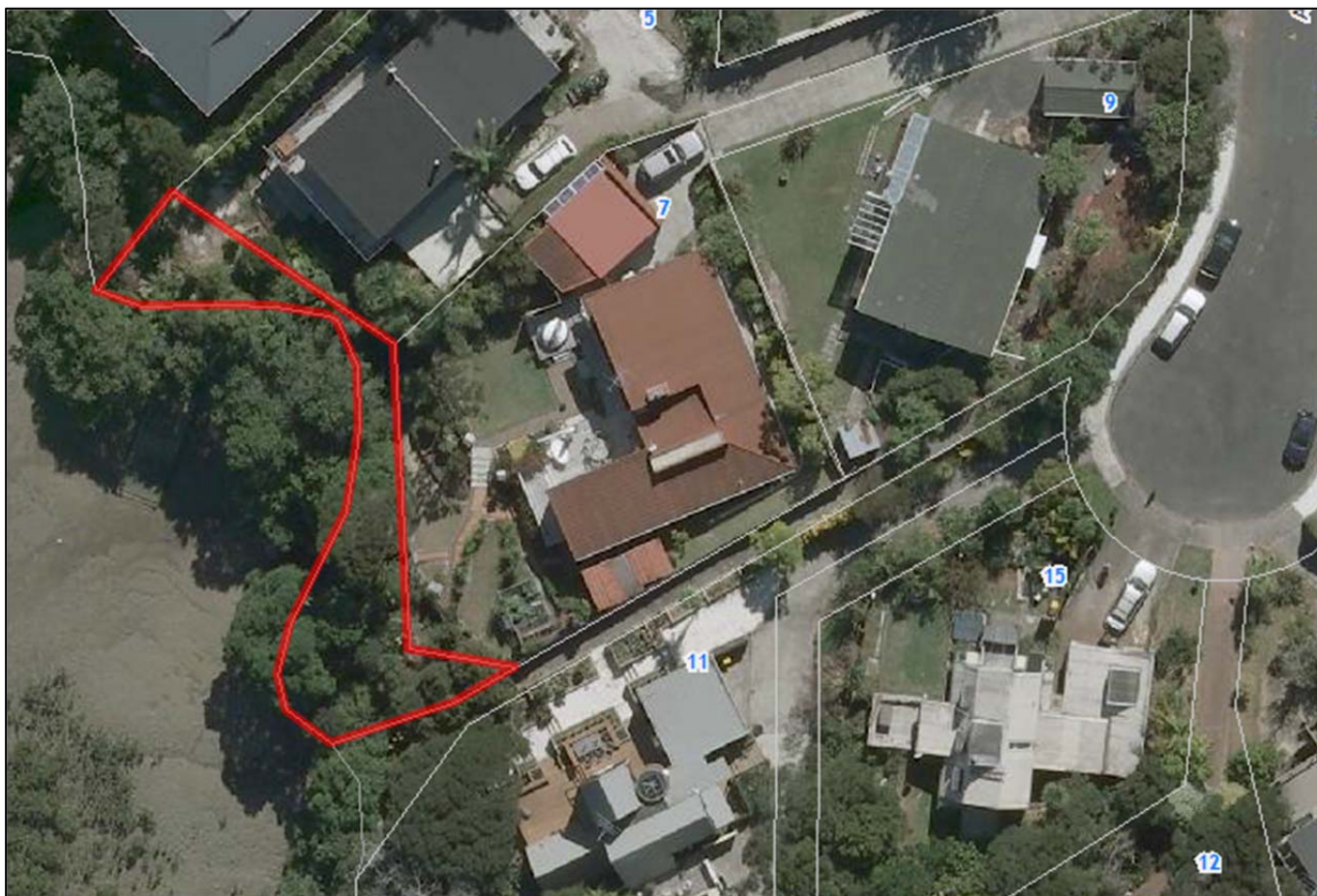
Park Name (official):	Agincourt Reserve					
Reserve Management Plan:	Local Amenity Reserves, February 1983					
Entrance	Auckland Council sign	North Shore City sign	Pre-North Shore City sign	Inadequate signage	No signage	Notes
Agincourt Street		✓				
Archers Road		✓				
Blenheim Street		✓				
Other Notes:						

2.5. AKORANGA RESERVE (ONEWA DOMAIN), NORTHCOTE



Park Name (official):	Part of Onewa Domain (known as Akoranga Reserve)					
Reserve Management Plan:	Onewa Domain and Smiths Bush Scenic Reserve, May 1993					
Entrance	Auckland Council sign	North Shore City sign	Pre-North Shore City sign	Inadequate signage	No signage	Notes
Akoranga Road					✓	No reserve signage on either side of YMCA building site.
Hato Petera College					✓	Track from Hato Petera College sportsfield.
Other Notes:	<p>Lack of signage means that it is not obvious that buildings are on reserve land.</p> <p><i>Akoranga Reserve</i> is actually part of <i>Onewa Domain</i>, but due to it being separated from the rest of the reserve by Akoranga Drive, it is known as <i>Akoranga Reserve</i>.</p>					

2.6. AMELIA PLACE ESPLANADE RESERVE, BEACH HAVEN



Park Name (official):	Amelia Place Esplanade Reserve					
Reserve Management Plan:	Foreshore/Esplanade Reserves, 10 October 1989 Amelia Place Esplanade Reserve, [date unknown]					
Entrance	Auckland Council sign	North Shore City sign	Pre-North Shore City sign	Inadequate signage	No signage	Notes
Amelia Place					✓	
Other Notes:	<ul style="list-style-type: none"> I recommend that GIS is updated to include the accessway (Lot 50 DP 56178) from Amelia Place, as this is part of the reserve according to reserve management plan. The Unitary Plan map also needs to be updated as it is currently marked as road. 					

2.7. ANNE MCLEAN RESERVE, BAYVIEW



Park Name (official):	Anne McLean Reserve					
Reserve Management Plan:	No reserve management plan					
Entrance	Auckland Council sign	North Shore City sign	Pre-North Shore City sign	Inadequate signage	No signage	Notes
Corner Anne McLean Drive / Emery Grove					✓	
Other Notes:						

2.8. ARCADIA RESERVE, BAYVIEW

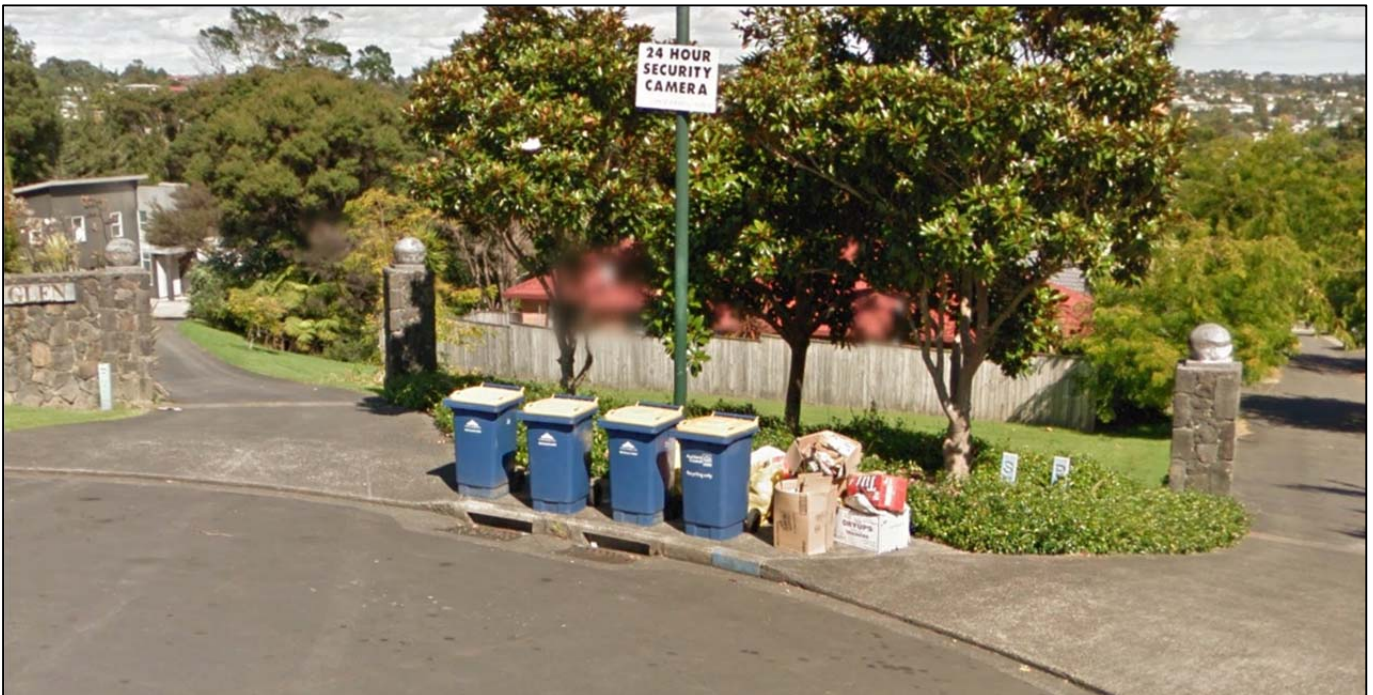


Park Name (official):	Arcadia Reserve					
Reserve Management Plan:	Local Amenity Reserves, February 1983					
Entrance	Auckland Council sign	North Shore City sign	Pre-North Shore City sign	Inadequate signage	No signage	Notes
Arcadia Crescent					✓	Steps appear to be private property as no signage. See photo below.
Pemberton Avenue (1)					✓	
Pemberton Avenue (2)					✓	
Nikau Reserve					✓	

Entrance	Auckland Council sign	North Shore City sign	Pre-North Shore City sign	Inadequate signage	No signage	Notes
Heathglen Place					✓	
Manuka Road					✓	Not an obvious entrance. See photo below.
Other Notes:						



Arcadia Crescent entrance – steps appear to be private property.



Heathglen Place entrance – whole grass area between pillars and stretching back alongside left driveway is reserve.



Manuka Road entrance – not obvious entrance as has been encroached upon by neighbour's planting and dwelling over accessway.

2.9. AYTON RESERVE, TOTARA VALE



Park Name (official):	Ayton Reserve					
Reserve Management Plan:	No reserve management plan					
Entrance	Auckland Council sign	North Shore City sign	Pre-North Shore City sign	Inadequate signage	No signage	Notes
Ayton Drive					✓	
Wairau Road (slip road)					✓	Not an obvious entrance.
Other Notes:						

2.10. BEACH HAVEN PLAZA, BEACH HAVEN



Park Name (official):	N/A					
Reserve Management Plan:	No reserve management plan					
Entrance	Auckland Council sign	North Shore City sign	Pre-North Shore City sign	Inadequate signage	No signage	Notes
Rangatira Road					✓	
Other Notes:	<p>This area is not gazetted as a reserve and therefore does not have an official name.</p> <p>► I recommend that 364 Rangatira Road be gazetted as a reserve, to be known as <i>Beach Haven Plaza Reserve</i>.</p>					

2.11. BIRKENHEAD DOMAIN, BIRKENHEAD



Park Name (official):	Birkenhead Domain					
Reserve Management Plan:	Eskdale Reserve Network, 1998					
Entrance	Auckland Council sign	North Shore City sign	Pre-North Shore City sign	Inadequate signage	No signage	Notes
Domain Road (track entrance)		✓				Sign incorrectly refers to reserve as <i>Eskdale Reserve</i> .
Corner Domain Road / Glenfield Road					✓	
Glenfield Road (1)				✓		Sign says "To Track Network".
Glenfield Road (2)					✓	There was a map of track network, but it has been removed.

Entrance	Auckland Council sign	North Shore City sign	Pre-North Shore City sign	Inadequate signage	No signage	Notes
Eskdale Road (1)					✓	
Eskdale Road (2)					✓	
Inglis Street					✓	
Hobby Avenue					✓	
Other Notes:	<p><i>Birkenhead Domain</i> is part of the <i>Eskdale Reserve Network</i>. The Pony Club leases part of <i>Birkenhead Domain</i>. GIS is not displaying <i>Birkenhead Domain</i>, instead identifying its land as part of <i>Eskdale Reserve</i>. The <i>Eskdale Reserve Network</i> reserve management plan is clear that <i>Birkenhead Domain</i> exists as a reserve in its own right.</p> <ul style="list-style-type: none"> ▶ I recommend that GIS and signage be updated to identify Pt Allotment 122 Takapuna Parish SO 2473B, Pt Allotment 122 Takapuna Parish SO 24467, Allotment 671 Takapuna Parish and Allotment 672 Takapuna Parish as <i>Birkenhead Domain</i>, part of the <i>Eskdale Reserve Network</i>. 					

2.12. BIRKENHEAD WAR MEMORIAL PARK, BIRKENHEAD



Park Name (official):	Birkenhead War Memorial Park					
Reserve Management Plan:	Birkenhead War Memorial Park, November 2003					
Entrance	Auckland Council sign	North Shore City sign	Pre-North Shore City sign	Inadequate signage	No signage	Notes
Birkenhead Avenue					✓	
Recreation Drive					✓	Not obvious that road and all buildings are on reserve land.
Pompallier Park / Cemetery					✓	
Coroglen Avenue paper road					✓	

Entrance	Auckland Council sign	North Shore City sign	Pre-North Shore City sign	Inadequate signage	No signage	Notes
Park Hill Road					✓	Not an obvious entrance as unmarked driveway shared with private properties. See photo below.
Vienna Place					✓	Not an obvious entrance as strip of plants alongside private driveway. See photo below.
Miraka Place Reserve					✓	
Willow Avenue					✓	
Mahara Avenue					✓	
John Court Street (1)		✓	✓			Main entrance.
John Court Street (2)					✓	
Ian Marwick Place					✓	
Other Notes:	<p>Recreation Drive is on reserve land. <i>Pompallier Park</i> and the two cemeteries are considered part of <i>Birkenhead War Memorial Park</i> in the reserve management plan and there was intention to gazette them as such.</p> <ul style="list-style-type: none"> ▶ The status of <i>Pompallier Park</i>, <i>Birkenhead Roman Catholic Cemetery</i> and <i>Birkenhead Anglican Parish Cemetery</i> needs to be checked and GIS needs to be updated if found to be part of <i>Birkenhead War Memorial Park</i>. 					



Park Hill Road entrance - Not an obvious entrance as unmarked driveway shared with private properties.



Vienna Place entrance - Not an obvious entrance as planted strip behind private white letterbox.

2.13. BONITO SCENIC RESERVE, BAYVIEW



Park Name (official):	Bonito Scenic Reserve					
Reserve Management Plan:	Spinella and Bonito Reserves, June 1997 Local Amenity Reserves, February 1983					
Entrance	Auckland Council sign	North Shore City sign	Pre-North Shore City sign	Inadequate signage	No signage	Notes
Bonito Place		✓				
Spinella Reserve					✓	
Other Notes:						

2.14. BRASSEY ROAD RESERVE, BIRKENHEAD



Park Name (official):	Brassey Road Reserve					
Reserve Management Plan:	No reserve management plan					
Entrance	Auckland Council sign	North Shore City sign	Pre-North Shore City sign	Inadequate signage	No signage	Notes
Palmerston Road					✓	
Maunganui Road					✓	
Tizard Road						Access via Tizard Road paper road.
Other Notes:						

2.15. CADNESS LOOP, NORTHCOTE



Park Name (official):	Cadness Loop					
Reserve Management Plan:	No reserve management plan					
Entrance	Auckland Council sign	North Shore City sign	Pre-North Shore City sign	Inadequate signage	No signage	Notes
Cadness Street		✓				Sign incorrectly calls the reserve "Cadness Loop Reserve" which could lead to confusion with "Cadness Reserve".
Other Notes:	I recommend a larger sign for this site.					

2.16. CADNESS RESERVE, NORTHCOTE



Park Name (official):	Cadness Reserve					
Reserve Management Plan:	No reserve management plan					
Entrance	Auckland Council sign	North Shore City sign	Pre-North Shore City sign	Inadequate signage	No signage	Notes
Cadness Street (1)					✓	
Cadness Street (2)					✓	
Norman King Building / Carpark					✓	
Other Notes:	Marked on some maps as "Civic Reserve".					

2.17. CAMELOT RESERVE, GLENFIELD



Park Name (official):	Camelot Reserve					
Reserve Management Plan:	Local Amenity Reserves, February 1983					
Entrance	Auckland Council sign	North Shore City sign	Pre-North Shore City sign	Inadequate signage	No signage	Notes
Camelot Place		✓				
Bentley Avenue		✓				
Battle Place		✓				

Entrance	Auckland Council sign	North Shore City sign	Pre-North Shore City sign	Inadequate signage	No signage	Notes
Glenfield Primary School					✓	
Other Notes:						

2.18. CASTLETON-REID SCENIC RESERVE, BIRKENHEAD



Park Name (official):	Castleton-Reid Scenic Reserve					
Reserve Management Plan:	Local Amenity Reserves, February 1983					
Entrance	Auckland Council sign	North Shore City sign	Pre-North Shore City sign	Inadequate signage	No signage	Notes
Castleton Street					✓	
Verran Primary School					✓	
Verran Road (via Verran Road paper road)					✓	
Other Notes:	<p>The track from Castleton Street to Verran Primary School passes over reserve land.</p> <p>► I recommend that the boundary is updated in GIS to include the track from Castleton Street up to the reserve, as per the management plan.</p>					

2.19. CECIL EADY BUSH, NORTHCOTE



Park Name (official):	Cecil Eady Bush					
Reserve Management Plan:	Kauri Glen Reserve and Cecil Eady Bush, November 1999 (draft)					
Entrance	Auckland Council sign	North Shore City sign	Pre-North Shore City sign	Inadequate signage	No signage	Notes
Raymond Terrace					✓	Entrance not obvious as scrub between driveways. See photo below.
Kauri Glen Reserve					✓	
Mahuta Grove					✓	
Paruru Avenue					✓	Entrance not obvious as scrub between houses. See photo below.
Herons Way					✓	Access via Herons Way road reserve, but no signage.
Woodside Avenue (1)					✓	Entrance to south of bridge.

Entrance	Auckland Council sign	North Shore City sign	Pre-North Shore City sign	Inadequate signage	No signage	Notes
Woodside Avenue (2)					✓	Path north of bridge.
Lake Road					✓	Access via slip road.
Fowler Street					✓	Appears to be slip road. See photo below.
James Evans Drive					✓	
Holdaway Avenue (1)			✓	✓		Sign incorrectly says "To Kauri Glen".
Holdaway Avenue (2)					✓	Entrance not obvious as blocked by hedge. See photo below.
Kaihu Street					✓	Entrance not obvious as trees between private properties. See photo below.
Other Notes:	<p>GIS is incorrectly including <i>Cecil Eady Bush</i> within the boundary of <i>Kauri Glen Reserve</i>. In the above map, the area east of the yellow line is <i>Cecil Eady</i>.</p> <p>Part of Woodside Avenue and residential driveways are included in <i>Cecil Eady Bush</i>.</p> <ul style="list-style-type: none"> ▶ I recommend that GIS and signage for <i>Cecil Eady Bush</i> and <i>Kauri Glen Reserve</i> are updated to reflect the boundary, as per the reserve management plan. 					



Raymond Terrace entrance – scrub between properties.



Paruru Avenue entrance – scrub between properties.



Fowler Street entrance – what appears to be a slip road is actually part of Kauri Glen Reserve and links to Woodside Avenue.

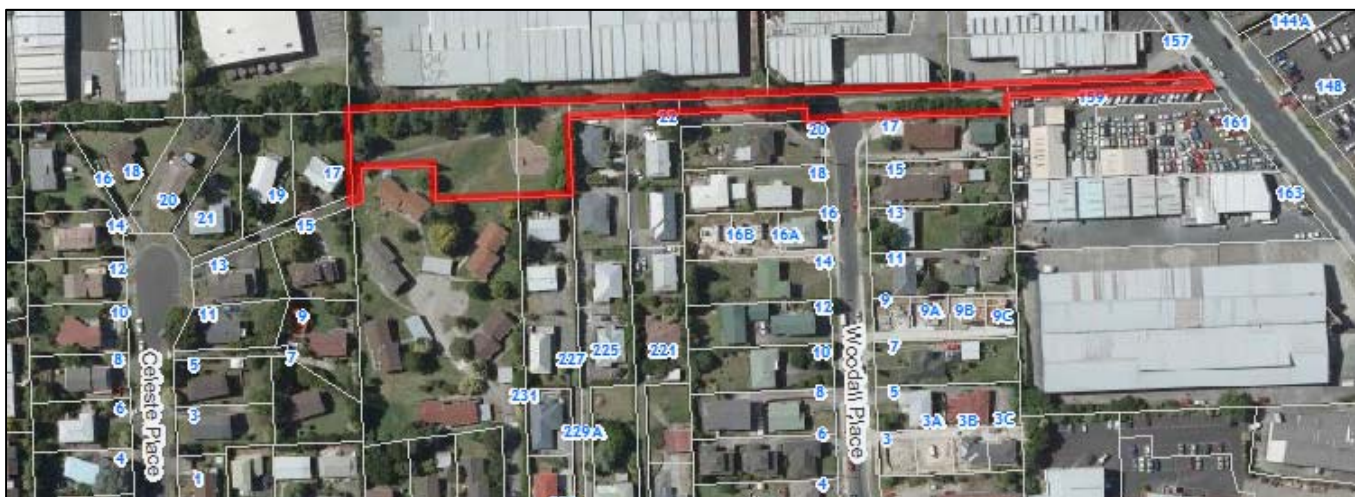


Holdaway Avenue southern entrance – not obvious entrance as blocked by hedge.

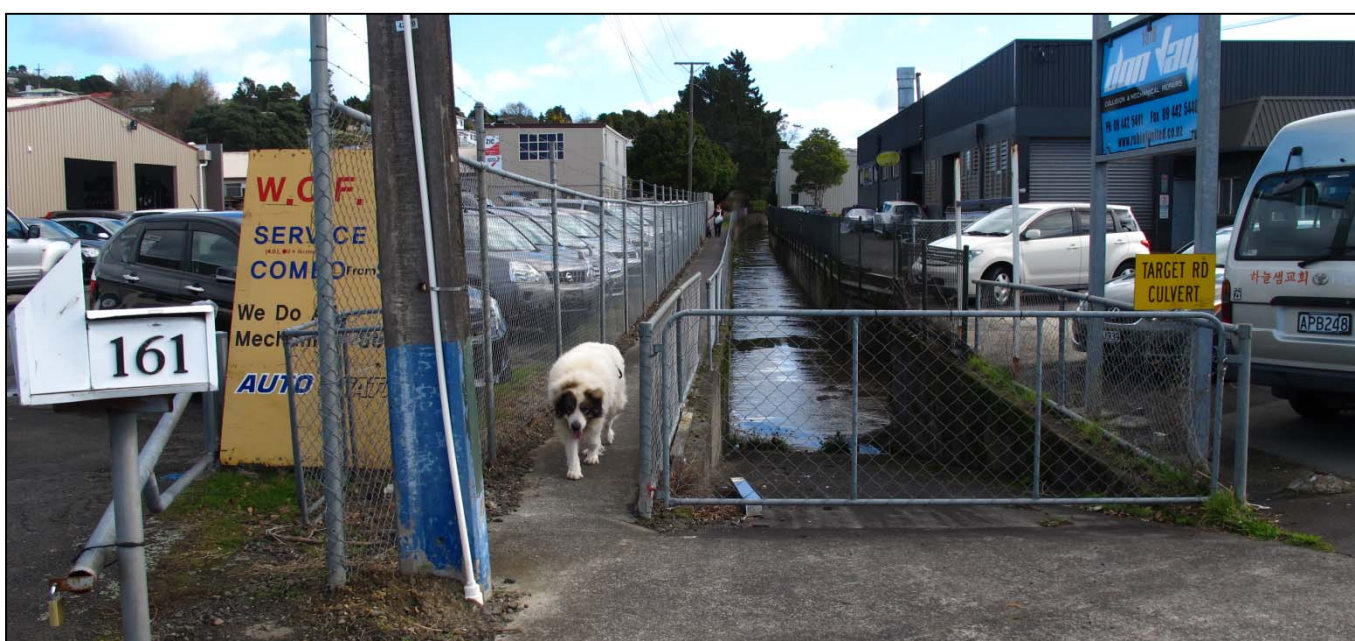


Kaihu Street entrance – not obvious entrance as trees between private garden and fence.

2.20. CELESTE RESERVE, TOTARA VALE



Park Name (official):	Celeste Reserve					
Reserve Management Plan:	No reserve management plan					
Entrance	Auckland Council sign	North Shore City sign	Pre-North Shore City sign	Inadequate signage	No signage	Notes
Celeste Place					✓	Down private driveway.
Woodall Place					✓	
Target Road					✓	
Other Notes:	This reserve is named for Celeste Place, yet the entrance is hidden down the end of a private right-of-way driveway.					



Target Road entrance – narrow unmarked path alongside stormwater stream.



Celeste Place entrance – unmarked park entrance hidden down private driveway.

2.21. CHATSWOOD RESERVE, CHATSWOOD



Park Name (official):	Chatswood Reserve					
Reserve Management Plan:	Chatswood and Homewood Reserves, September 1998					
Entrance	Auckland Council sign	North Shore City sign	Pre-North Shore City sign	Inadequate signage	No signage	Notes
Fitzpatrick Place (1)		✓				Eastern entrance.
Fitzpatrick Place (2)					✓	Western entrance. Path appears to be wide drain.
Chelsea View Drive (1)					✓	Gap between fences.
Chelsea View Drive (2)					✓	Gap between properties.

Entrance	Auckland Council sign	North Shore City sign	Pre-North Shore City sign	Inadequate signage	No signage	Notes
Chelsea View Drive (3)		✓				
Chelsea View Drive (4)		✓				
Portsea Place (1)					✓	Northern entrance. Grass between driveway and fence.
Portsea Place (2)		✓				Southern entrance.
Homewood Reserve					✓	Entrance at rear of reserve.
Homewood Place		✓				
Ravenstone Place (1)		✓				
Ravenstone Place (2)		✓				
Ravenstone Place (3)		✓				Access not included within reserve boundary on GIS.
Ravenstone Place (4)		✓				Access not included within reserve boundary on GIS.
David Beattie Place		✓				
Langstone Place		✓				
Chelsea Estate Heritage park					✓	
Mappin Place		✓				
Other Notes:	Back of 26 Mappin Place (Lot 2 DP 77523) marked as reserve but not included in <i>Chatswood Reserve</i> : ► I recommend that unnamed reserve Lot 2 DP 77523 be transferred into <i>Chatswood Reserve</i> .					



Fitzpatrick Place western entrance – not obvious entrance as appears to be a wide drain rather than a pathway.



Chelsea View Road northern entrance – Gap between fences.



Chelsea View Road southern entrance – Grass strip between properties.



Portsea Place northern entrance – grass strip between driveway and fence.

2.22. CHEALSEA ESTATE HERITAGE PARK, BIRKENHEAD / CHATSWOOD



Park Name (official):	Chelsea Estate Heritage Park					
Reserve Management Plan:	No reserve management plan					
Entrance	Auckland Council sign	North Shore City sign	Pre-North Shore City sign	Inadequate signage	No signage	Notes
Colonial Road		✓				
Blundell Place		✓				
Chatswood Reserve					✓	
Onetaunga Road		✓				

Entrance	Auckland Council sign	North Shore City sign	Pre-North Shore City sign	Inadequate signage	No signage	Notes
Kauri Point Centennial Park					✓	
Rawene Road		✓				
Rawene Road paper road		✓				
Huka Road		✓				
Other Notes:	<p><i>Chelsea Estate Heritage Park</i> straddles the suburbs of Birkenhead and Chatswood.</p> <p>Some of the park is accessible via an easement over Chelsea Sugar Refinery land.</p> <ul style="list-style-type: none"> ▶ If the land at 24 and 30 Huka Road is owned by Council, then I recommend that it be included in <i>Chelsea Estate Heritage Park</i>. 					

2.23. CITY VIEW TERRACE RESERVE, BIRKENHEAD

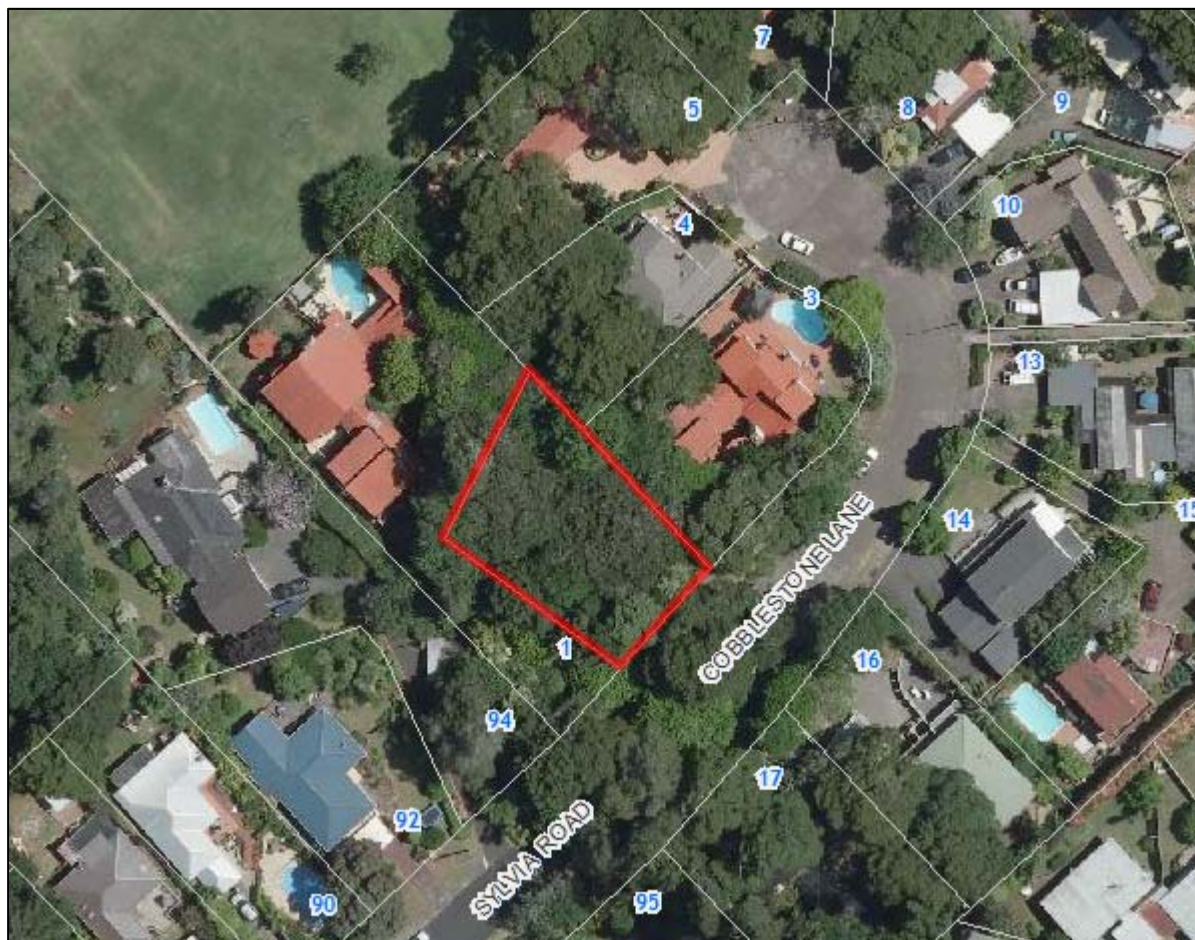


Park Name (official):	City View Terrace Reserve					
Reserve Management Plan:	City View Terrace Reserve, September 1989					
Entrance	Auckland Council sign	North Shore City sign	Pre-North Shore City sign	Inadequate signage	No signage	Notes
City View Terrace (1)		✓				Western entrance. Sign incorrectly says "City View Reserve"
City View Terrace (2)					✓	Eastern entrance.
Other Notes:	<p>Driveway at eastern entrance is reserve land but used by resident at 27 City View Terrace.</p> <ul style="list-style-type: none"> ▶ Update reserve name in GIS. ▶ Back parts of 29B and 35 Aorangi Place (Lot 4 DP 456975, Lot 2 DP 456975) is an unnamed reserve and should be officially transferred into either <i>City View Terrace Reserve</i> or <i>Kauri Glen Reserve</i>. 					



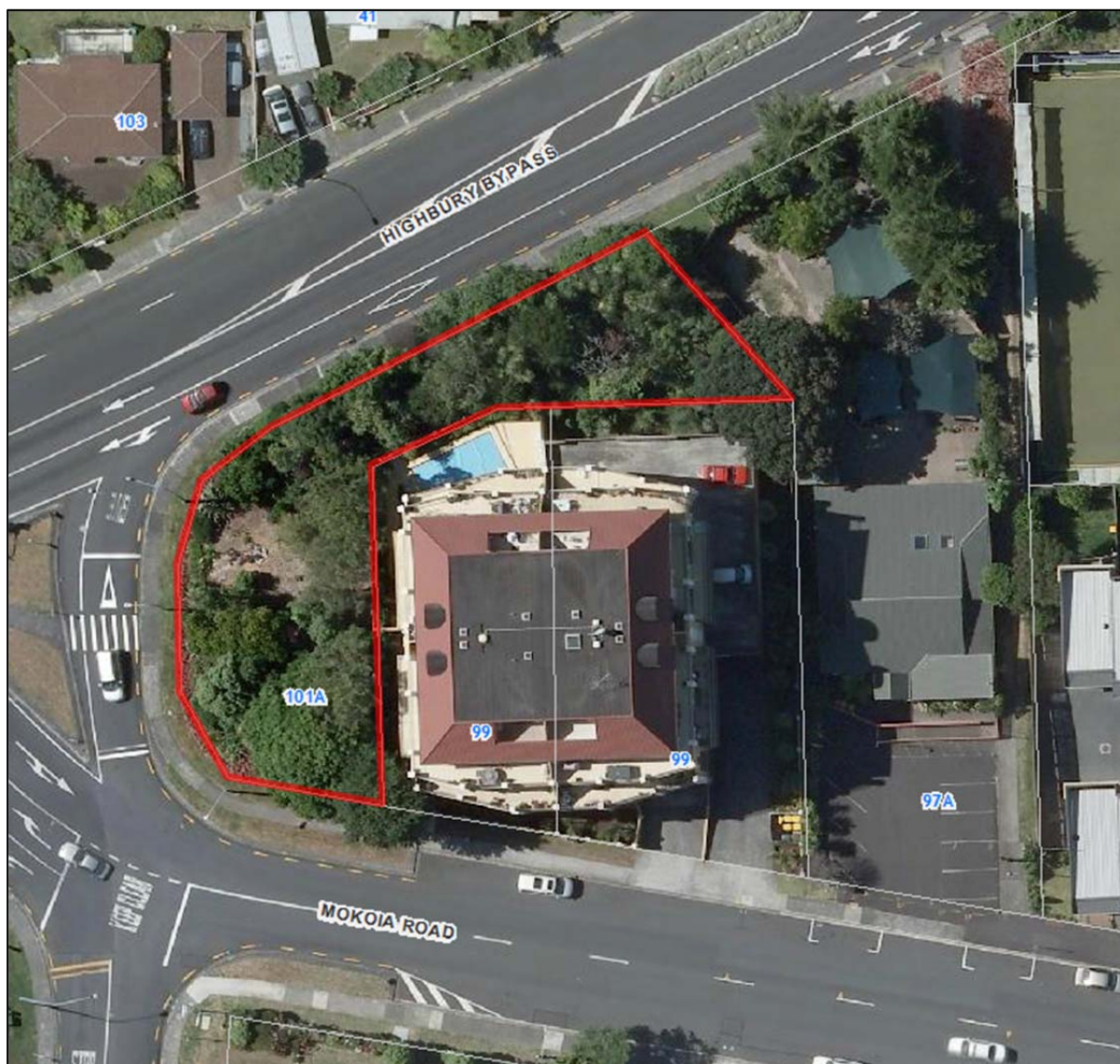
City View Terrace eastern entrance - driveway is entrance to reserve, but also used by resident.

2.24. COBBLESTONE LANE, HILLCREST



Park Name (official):	Cobblestone Lane					
Reserve Management Plan:	No reserve management plan					
Entrance	Auckland Council sign	North Shore City sign	Pre-North Shore City sign	Inadequate signage	No signage	Notes
Cobblestone Lane					✓	
Other Notes:	Reserve has the same name as the road.					

2.25. COLONIAL CORNER, BIRKENHEAD



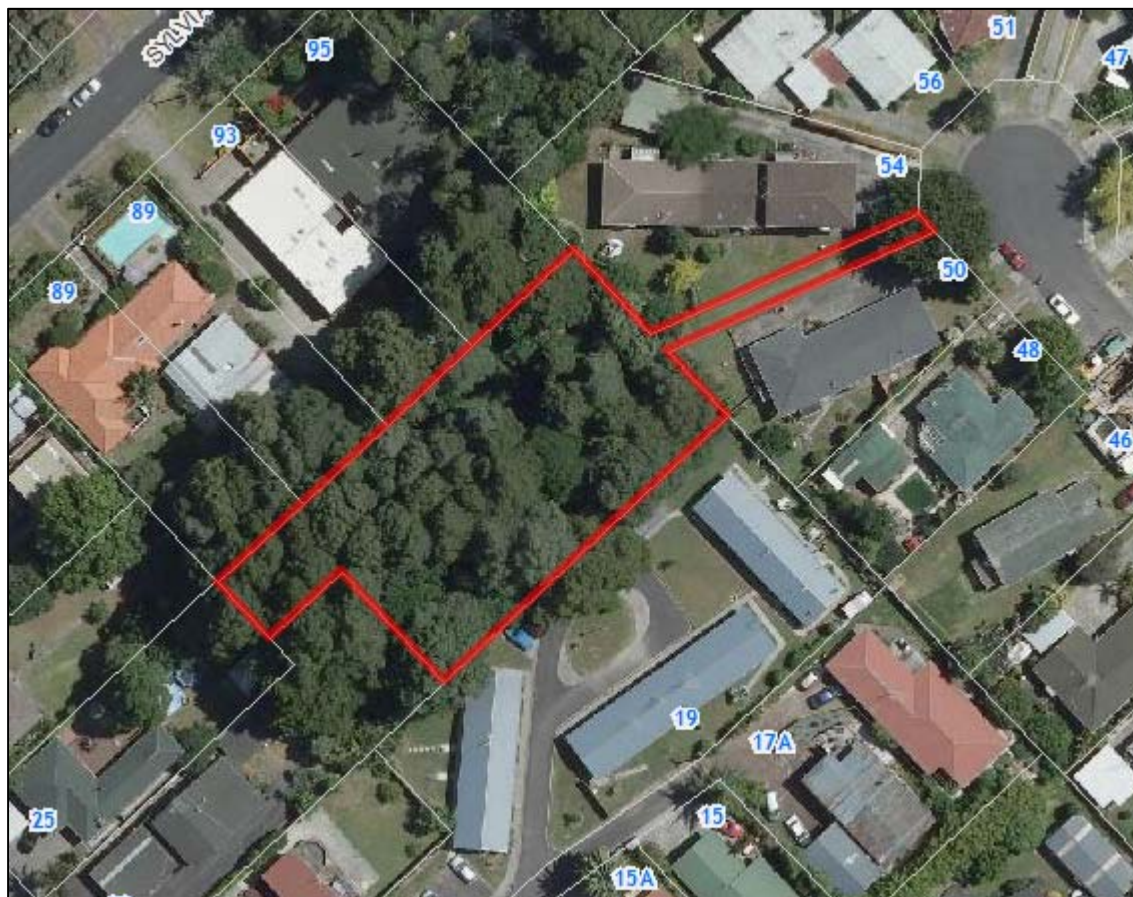
Park Name (official):	Colonial Corner					
Reserve Management Plan:	No reserve management plan					
Entrance	Auckland Council sign	North Shore City sign	Pre-North Shore City sign	Inadequate signage	No signage	Notes
Highbury Bypass					✓	.
Mokoia Road					✓	
Other Notes:	▶ 97a Mokoia Road (Birkenhead Kindergarten) was marked as Recreation 2 in NSCC District Plan, but Local Town Centre in PUAP. Was it part of Colonial Corner Reserve? It includes a public walkway.					

2.26. CRESTA AVENUE ESPLANADE RESERVE, BEACH HAVEN



Park Name (official):	Cresta Avenue Esplanade Reserve					
Reserve Management Plan:	No reserve management plan					
Entrance	Auckland Council sign	North Shore City sign	Pre-North Shore City sign	Inadequate signage	No signage	Notes
Foreshore					✓	
Other Notes:						

2.27. DEBBIE CHAMBERLAIN RESERVE, HILLCREST



Park Name (official):	Debbie Chamberlain Reserve					
Reserve Management Plan:	No reserve management plan					
Entrance	Auckland Council sign	North Shore City sign	Pre-North Shore City sign	Inadequate signage	No signage	Notes
Evelyn Place		✓				
Other Notes:						

2.28. DIANA RESERVE, GLENFIELD



Park Name (official):	Diana Reserve					
Reserve Management Plan:	Local Amenity Reserves, February 1983					
Entrance	Auckland Council sign	North Shore City sign	Pre-North Shore City sign	Inadequate signage	No signage	Notes
Diana Drive		✓				
Other Notes:						

2.29. DOWNING STREET DOMAIN, GLENFIELD



Park Name (official):	Downing Street Domain					
Reserve Management Plan:	Downing Street Domain, June 1998					
Entrance	Auckland Council sign	North Shore City sign	Pre-North Shore City sign	Inadequate signage	No signage	Notes
Downing Street (1)		✓				Southern side of road. Sign incorrectly calls reserve "Downing Street Reserve".
Downing Street (2)					✓	Northern side of road.
Other Notes:	Reserve straddles both sides of Downing Street, but only Southern side has signage. Sign and GIS both incorrectly call reserve "Downing Street Reserve".					

2.30. DROME VIEW PLACE RESERVE, BEACH HAVEN



Park Name (official):	Drome View Place Reserve					
Reserve Management Plan:	Drome View Place Reserve, September 1989					
Entrance	Auckland Council sign	North Shore City sign	Pre-North Shore City sign	Inadequate signage	No signage	Notes
Drome View Place					✓	
Other Notes:	<p>Not an obvious reserve as there is no reserve signage and the fence makes it appear to be privately owned.</p> <p>The reserve management plan states that "Council will ensure that a convenient and high level of public access to the reserve is maintained at all times. Tenants who use part of the reserve under provision of a lease shall not have the right to limit public from Council owned reserve land." It also states that playcentre outdoor equipment can be used by local children outside open hours.</p> <ul style="list-style-type: none"> As this area is not well served by recreation reserves, it is important that a way is found to ensure public access to <i>Drome View Place Reserve</i>, without compromising safety or security. 					

2.31. DUDDING AVENUE RESERVE, NORTHCOTE



Park Name (official):	Dudding Avenue Reserve					
Reserve Management Plan:	No reserve management plan					
Entrance	Auckland Council sign	North Shore City sign	Pre-North Shore City sign	Inadequate signage	No signage	Notes
Dudding Avenue				✓		Signage about removing plants, but not reserve name.
Kororo Street			✓			
Other Notes:						

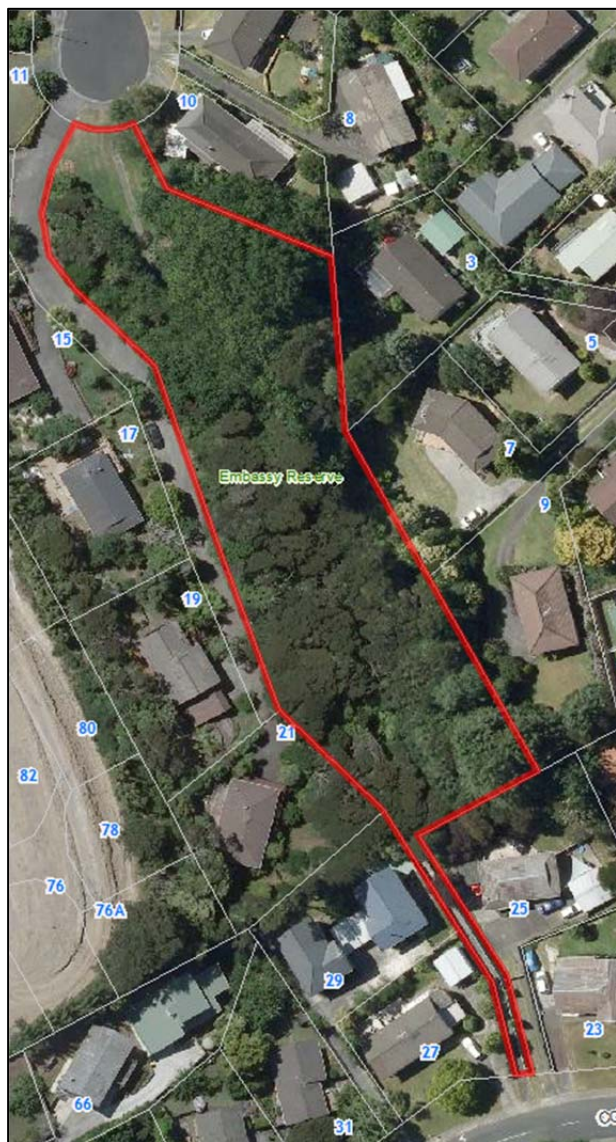
2.32. ELLIOTT AVENUE RESERVE, BAYVIEW



Park Name (official):	Elliott Avenue Reserve					
Reserve Management Plan:	Elliott Avenue Reserve, 1981					
Entrance	Auckland Council sign	North Shore City sign	Pre-North Shore City sign	Inadequate signage	No signage	Notes
Elliott Avenue		✓				Sign incorrectly says "Elliott Reserve".
Spinella Drive		✓				Sign incorrectly says "Elliott Reserve".
Malibu Grove		✓				Sign incorrectly says "Elliott Reserve".

Entrance	Auckland Council sign	North Shore City sign	Pre-North Shore City sign	Inadequate signage	No signage	Notes
Manuka Road		✓				Sign incorrectly says "Elliott Reserve".
Other Notes:	<ul style="list-style-type: none"> GIS and signage need to be updated from "Elliot Reserve" to "Elliot Avenue Reserve", as per the reserve management plan. 					

2.33. EMBASSY RESERVE, GLENFIELD



Park Name (official):	Embassy Reserve					
Reserve Management Plan:	Local Amenity Reserves, February 1983					
Entrance	Auckland Council sign	North Shore City sign	Pre-North Shore City sign	Inadequate signage	No signage	Notes
Embassy Place		✓				
Contessa Drive		✓				
Other Notes:						

2.34. ESKDALE RESERVE, BIRKDALE / BIRKENHEAD / GLENFIELD



Park Name (official):	Eskdale Reserve (also known as Eskdale Scenic Reserve)					
Reserve Management Plan:	Eskdale Reserve Network, 1998 Local Amenity Reserves, February 1983					
Entrance	Auckland Council sign	North Shore City sign	Pre-North Shore City sign	Inadequate signage	No signage	Notes
Eskdale Road (1)					✓	Not an obvious entrance as appears to be a private driveway.
Eskdale Road (2)					✓	Two open areas near roundabout.
Eskdale Road (3)		✓	✓			
Lauderdale Reserve					✓	
Tree View Reserve					✓	

Entrance	Auckland Council sign	North Shore City sign	Pre-North Shore City sign	Inadequate signage	No signage	Notes
Valley View Road					✓	Not an obvious entrance as grass strip between driveways.
Brunton Place					✓	Not an obvious entrance as grass strip between driveways.
Hiwihau Reserve					✓	
Other Notes:	<p><i>Eskdale Reserve</i> crosses the boundaries of suburbs Birkdale, Birkenhead and Glenfield.</p> <p><i>Eskdale Reserve</i> is part of the <i>Eskdale Reserve Network</i>.</p> <p><i>Eskdale Reserve</i> was formally divided into two reserves: <i>Eskdale Reserve</i> (western open part) and <i>Eskdale Bush Scenic Reserve</i>.</p> <p>GIS is incorrectly including <i>Birkenhead Domain</i> and part of <i>Hiwihau Reserve</i> as part of <i>Eskdale Reserve</i>. The <i>Eskdale Reserve Network</i> reserve management plan is clear that each reserve in the network exists as a reserve in its own right.</p> <p>In the above map, the area to the North-West of the yellow line is <i>Eskdale Reserve</i>.</p> <ul style="list-style-type: none"> I recommend that GIS and signage be updated to “<i>Eskdale Reserve, part of the Eskdale Reserve Network</i>”, as per the reserve management plan, and not include areas designated as <i>Birkenhead Domain</i> and <i>Hiwihau Reserve</i>. 					



Eskdale Road northern entrance – unmarked driveway.



Valley View Road entrance – Grass strip between driveways.



Brunton Place entrance – Grass strip between driveways.

2.35. FERNGLEN NATIVE PLANT GARDENS, BIRKENHEAD



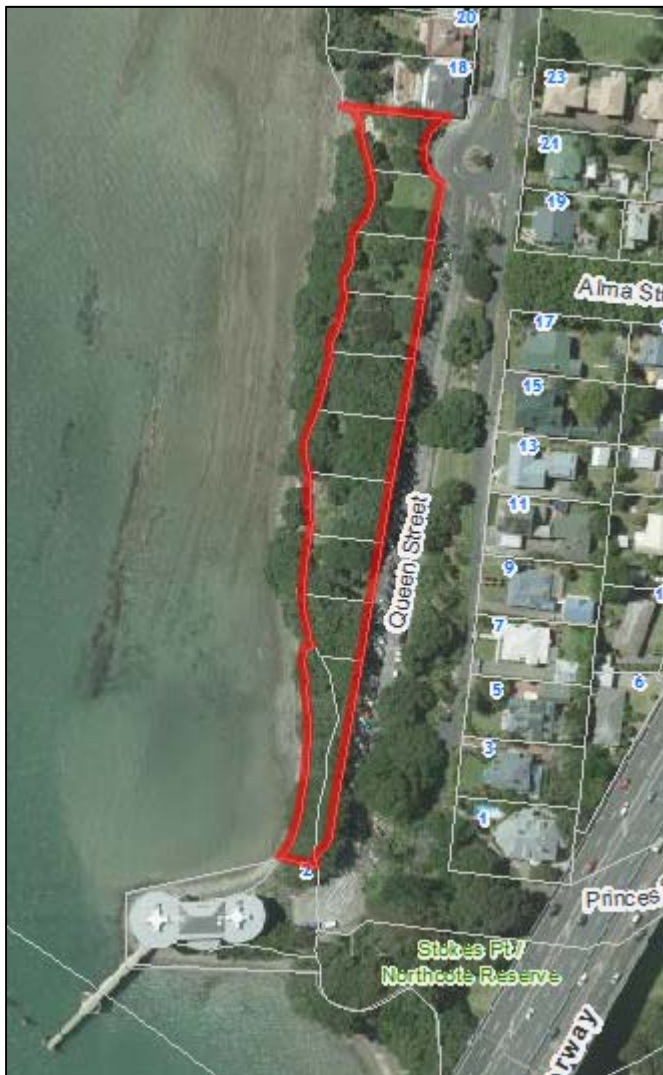
Park Name (official):	Fernglen Native Plant Gardens (also known as Fernglen Gardens)					
Reserve Management Plan:	Fernglen Native Plant Gardens, [date unknown]					
Entrance	Auckland Council sign	North Shore City sign	Pre-North Shore City sign	Inadequate signage	No signage	Notes
Kauri Road (1)				✓		NSCC sign "Fernglen Native Plant Gardens" and "Fernglen" on gate, but no standard entrance signage to indicate that this is a public reserve and not private property.
Kauri Road (2)					✓	
Other Notes:	▶ Update GIS to reflect the official name of the reserve: <i>Fernglen Native Plant Gardens</i> .					

2.36. FERNWOOD GROVE, BAYVIEW



Park Name (official):	Fernwood Grove					
Reserve Management Plan:	No reserve management plan					
Entrance	Auckland Council sign	North Shore City sign	Pre-North Shore City sign	Inadequate signage	No signage	Notes
Corner Fernwood Grove / Spinella Drive				✓		Wooden sign says "Fernwood".
Glendhu Scenic Reserve					✓	
Other Notes:	Playground is on road reserve.					

2.37. FISHERMANS WHARF, NORTHCOTE POINT



Park Name (official):	Fishermans Wharf					
Reserve Management Plan:	No reserve management plan					
Entrance	Auckland Council sign	North Shore City sign	Pre-North Shore City sign	Inadequate signage	No signage	Notes
Queen Street					✓	There is a white pole at the northern end of the reserve which may have once held an entrance sign.
Other Notes:	Listed on some maps as <i>Northcote Domain</i> . The building formally known as "Fisherman's Wharf" is not on <i>Fishermans Wharf</i> .					

2.38. FOWLER RESERVE, NORTHCOTE



Park Name (official):	Fowler Reserve					
Reserve Management Plan:	No reserve management plan					
Entrance	Auckland Council sign	North Shore City sign	Pre-North Shore City sign	Inadequate signage	No signage	Notes
Fowler Street				✓		Sign says "To Lake Road".
Lake Road				✓		Entrance down private driveway. Sign on Lake Road says "Walkway".
Other Notes:						

2.39. FRANCIS KENDALL RESERVE, GLENFIELD



Park Name (official):	Francis Kendall Reserve					
Reserve Management Plan:	No reserve management plan					
Entrance	Auckland Council sign	North Shore City sign	Pre-North Shore City sign	Inadequate signage	No signage	Notes
Kaipatiki Road					✓	No entrance signage; no track signage.
Chedworth Drive					✓	
Stephanie Close					✓	
Tree View Reserve					✓	

Entrance	Auckland Council sign	North Shore City sign	Pre-North Shore City sign	Inadequate signage	No signage	Notes
Tree View Reserve					✓	
Lauderdale Reserve					✓	
Other Notes:						



Stephanie Close entrance – Due to neighbour's fencing, could be mistaken for private pathway.

2.40. FRED ANDERSON RESERVE, BEACH HAVEN



Park Name (official):	Fred Anderson Reserve					
Reserve Management Plan:	Foreshore/Esplanade Reserves, 10 October 1989					
Entrance	Auckland Council sign	North Shore City sign	Pre-North Shore City sign	Inadequate signage	No signage	Notes
Valhalla Drive			✓			
Island Bay Road / Island Bay Reserve					✓	
Other Notes:	<p>GIS is incorrectly identifying the boundary of <i>Fred Anderson Reserve</i>. Only the area north of the yellow line is <i>Fred Anderson Reserve</i>; south of the line is <i>Soldiers Bay Reserve</i>.</p> <ul style="list-style-type: none"> I recommend that GIS and signage for <i>Fred Anderson Reserve</i> and <i>Soldiers Bay Reserve</i> is updated to reflect the boundaries in the reserve management plan 					

2.41. GLENCOURT RESERVE, GLENFIELD



Park Name (official):	Glencourt Reserve					
Reserve Management Plan:	Local Amenity Reserves, February 1983					
Entrance	Auckland Council sign	North Shore City sign	Pre-North Shore City sign	Inadequate signage	No signage	Notes
Beaudine Avenue		✓				
Glencourt Place					✓	
Other Notes:	<ul style="list-style-type: none"> GIS boundary needs to be corrected to include accessway from Beaudine Avenue, as this is included in reserve management plan. 					

2.42. GLENDHU SCENIC RESERVE, GLENFIELD

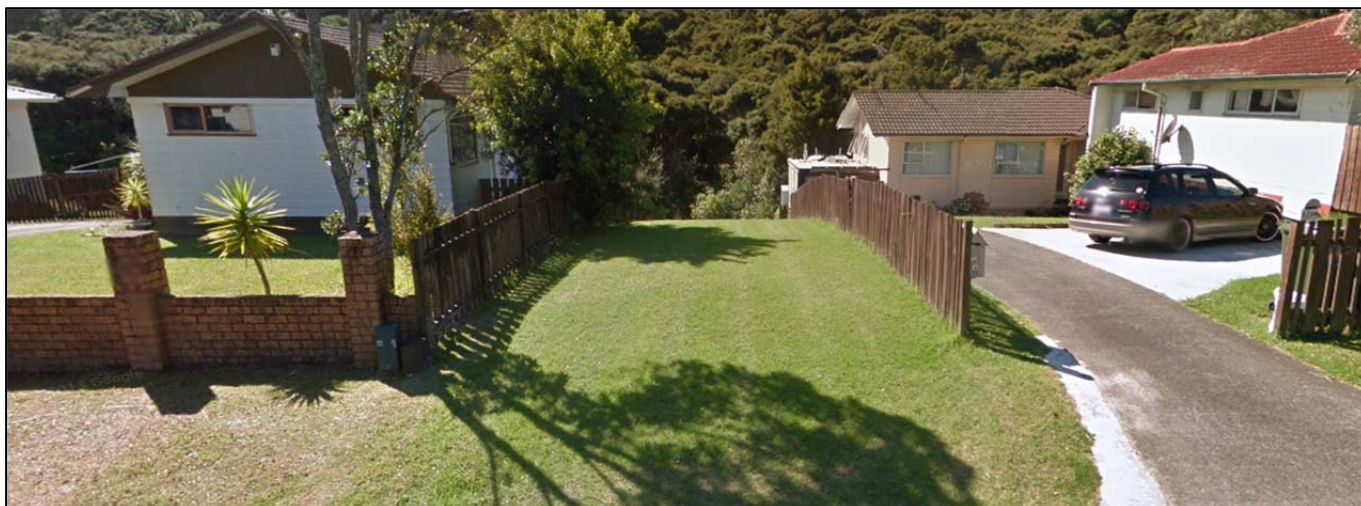


Park Name (official):	Glendhu Scenic Reserve					
Reserve Management Plan:	Local Amenity Reserves, February 1983					
Entrance	Auckland Council sign	North Shore City sign	Pre-North Shore City sign	Inadequate signage	No signage	Notes
Glendhu Road (eastern)					✓	
Glendhu Road (western)					✓	
Glastron Place					✓	See photo below.
Spinella Drive (1)					✓	See photo below.
Spinella Drive (2)					✓	
Spinella Drive (3)					✓	Entrance blocked by private fence. See photo below.
Fernwood Grove (reserve)					✓	Track entrance at rear of reserve.

Entrance	Auckland Council sign	North Shore City sign	Pre-North Shore City sign	Inadequate signage	No signage	Notes
Fernwood Grove (road)					✓	
Sapphire Place					✓	Gap between houses. See photo below.
Other Notes:	Originally known as <i>Glendhu Scenic Reserve East</i> and <i>Glendhu Scenic Reserve West</i> before the reserves were extended and joined.					



Glaston Place entrance – unmarked grass corridor between fences.



Spinella Drive western entrance – unmarked grass corridor between fences.



Spinella Drive eastern entrance – blocked by dark brown fence behind letterbox.



Sapphire Place entrance – Gap between houses.

2.43. GLENFIELD CEMETERY, BIRKENHEAD



Park Name (official):	Glenfield Cemetery					
Reserve Management Plan:	Eskdale Reserve Network, 1998					
Entrance	Auckland Council sign	North Shore City sign	Pre-North Shore City sign	Inadequate signage	No signage	Notes
Glenfield Road					✓	
Eskdale Road (1)					✓	
Eskdale Road (2)					✓	
Birkenhead Domain					✓	
Other Notes:	Glenfield Cemetery is part of the Eskdale Reserve Network.					

2.44. GLENFIELD HALL AND DOMAIN, GLENFIELD



Park Name (official):	Glenfield Hall & Domain					
Reserve Management Plan:	No reserve management plan					
Entrance	Auckland Council sign	North Shore City sign	Pre-North Shore City sign	Inadequate signage	No signage	Notes
Hall Road		✓				Sign incorrectly calls the reserve "Glenfield Domain & Hall".
Glenfield Road / Hogans Road intersection					✓	
Other Notes:						

2.45. GOLD HOLE, NORTHCOTE POINT



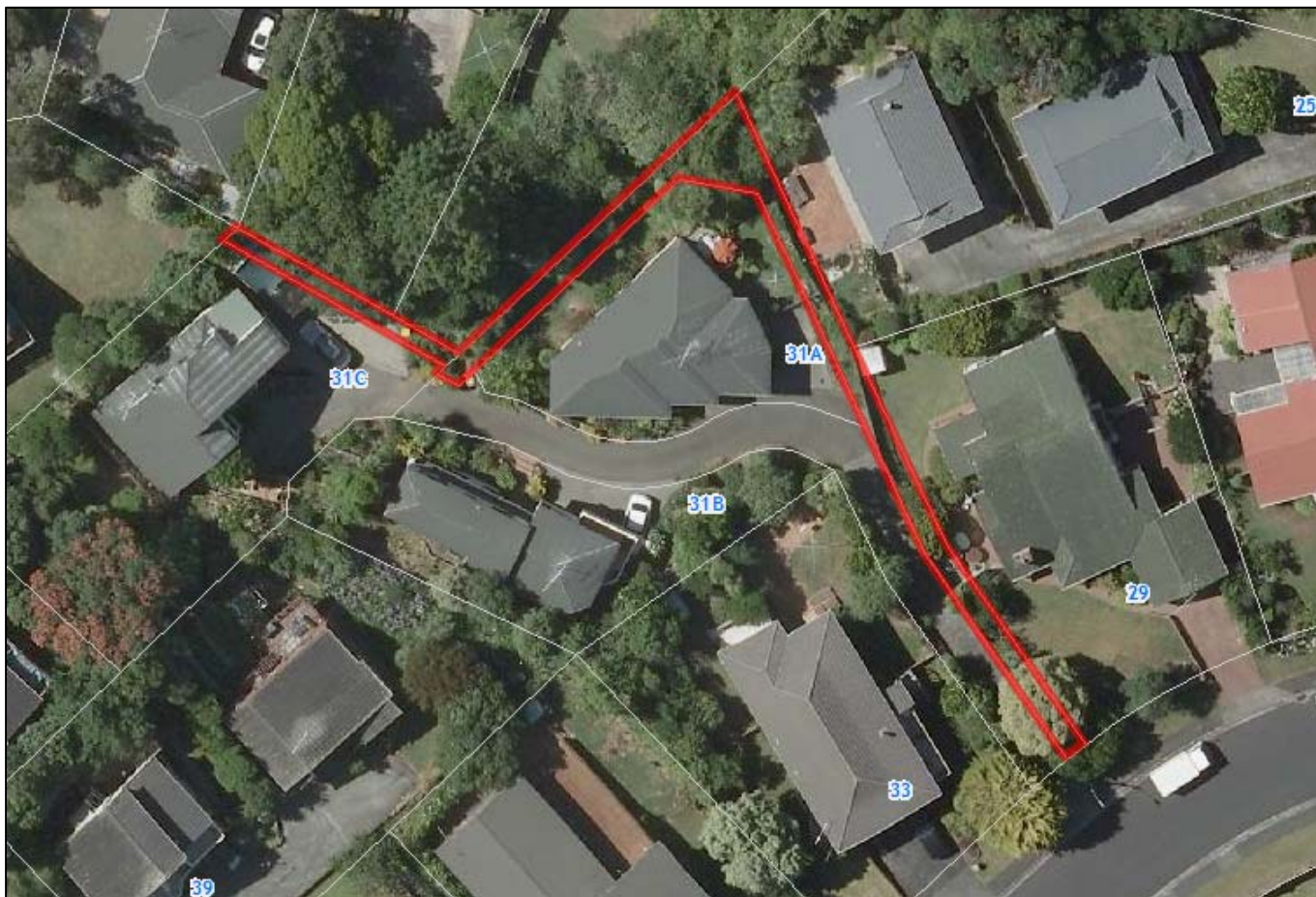
Park Name (official):	Gold Hole					
Reserve Management Plan:	No reserve management plan					
Entrance	Auckland Council sign	North Shore City sign	Pre-North Shore City sign	Inadequate signage	No signage	Notes
Princes Street					✓	
Other Notes:	Gold Hole stretches under the motorway.					

2.46. GREENSLADE RESERVE, NORTHCOTE



Park Name (official):	Greenslade Reserve					
Reserve Management Plan:	No reserve management plan					
Entrance	Auckland Council sign	North Shore City sign	Pre-North Shore City sign	Inadequate signage	No signage	Notes
Greenslade Crescent					✓	Path to fitness equipment.
Corner Greenslade Crescent / Lake Road				✓		White North Shore City Council sign says "Greenslade Open Space".
Lake Road					✓	
Other Notes:						

2.47. GREENVALLEY ACCESSWAY, GLENFIELD



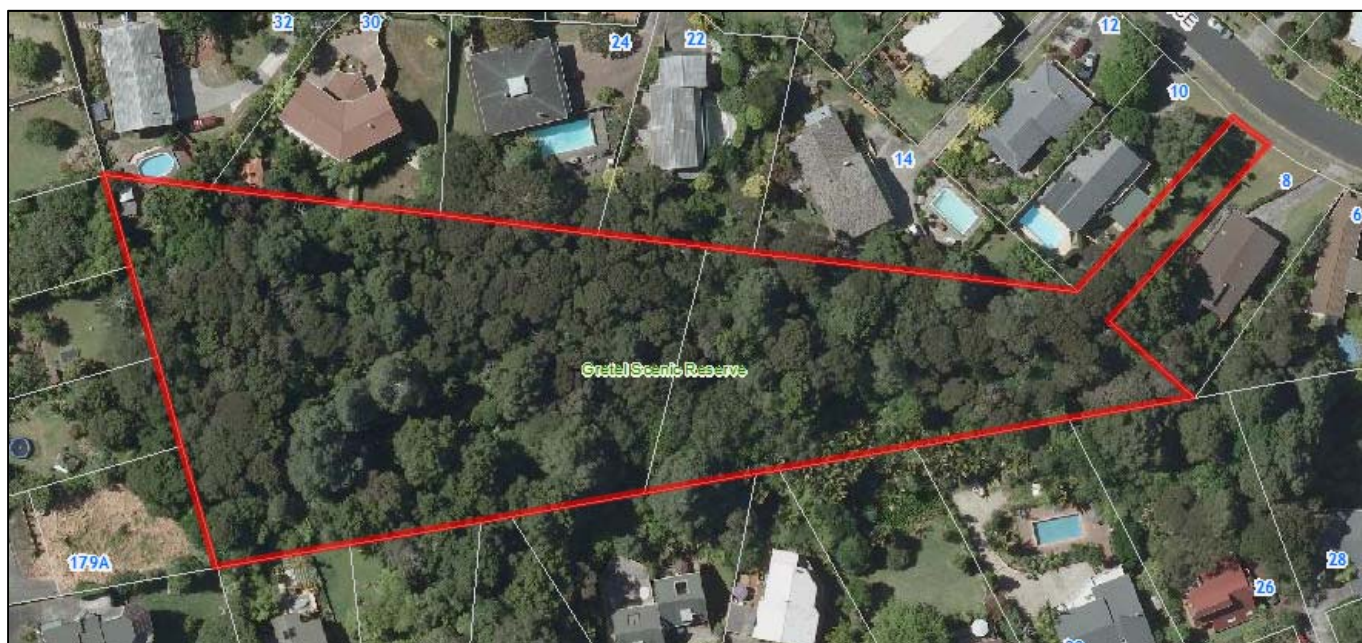
Park Name (official):	Greenvalley Accessway					
Reserve Management Plan:	No reserve management plan					
Entrance	Auckland Council sign	North Shore City sign	Pre-North Shore City sign	Inadequate signage	No signage	Notes
Greenvalley Rise					✓	
Other Notes:	<p>This reserve has been substantially encroached upon.</p> <p>The entrance to this reserve is not obvious as a private fence has been built across it.</p> <p>The reserve may have originally intended to link to <i>Woodcote Scenic Reserve</i>, but it doesn't quite get there, instead ending at private property.</p>					

2.48. GREENVALLEY RESERVE, GLENFIELD



Park Name (official):	Greenvalley Reserve					
Reserve Management Plan:	No reserve management plan					
Entrance	Auckland Council sign	North Shore City sign	Pre-North Shore City sign	Inadequate signage	No signage	Notes
Greenridge Court					✓	
Greenvalley stormwater dry pond					✓	
Glenfield Road					✓	
Greenvalley Rise (cul-de-sac)					✓	
Other Notes:	This reserve is in two sections, with the eastern section bordering a stormwater dry pond.					

2.49. GRETEL SCENIC RESERVE, HILLCREST



Park Name (official):	Gretel Scenic Reserve					
Reserve Management Plan:	Local Amenity Reserves, February 1983					
Entrance	Auckland Council sign	North Shore City sign	Pre-North Shore City sign	Inadequate signage	No signage	Notes
Gretel Place		✓				Sign incorrectly calls reserve "Gretel Reserve".
Other Notes:						

2.50. HADFIELD STREET RESERVE, BEACH HAVEN



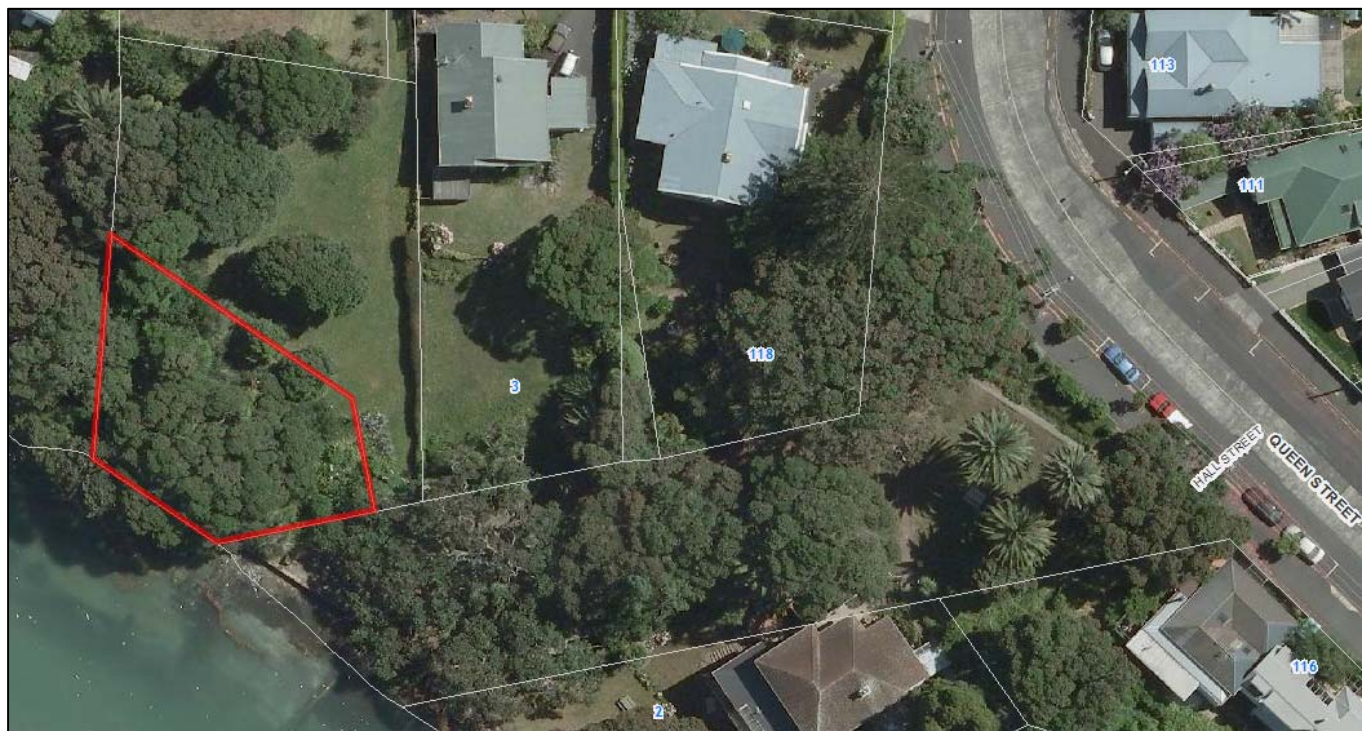
Park Name (official):	Hadfield Street Reserve					
Reserve Management Plan:	No reserve management plan					
Entrance	Auckland Council sign	North Shore City sign	Pre-North Shore City sign	Inadequate signage	No signage	Notes
Hadfield Street (1)					✓	
Hadfield Street (2)					✓	Wastewater Pump Station access.
Hadfield Street (3)					✓	Bush bordering southern side of Hadfield Street
Poaka Place				✓		Walkway sign, no mention of reserve name.

Entrance	Auckland Council sign	North Shore City sign	Pre-North Shore City sign	Inadequate signage	No signage	Notes
Odin Place Reserve					✓	
Moller Street / Island Bay Reserve					✓	
Seahorse Place					✓	
Other Notes:	The <i>Island Bay Park</i> reserve management plan includes <i>Hadfield Street Reserve</i> , <i>Odin Place Reserve</i> and part of <i>Island Bay Reserve</i> . I am unsure of the status of this management plan and whether the reserve names in GIS are valid.					



Seahorse Place entrance – Unmarked path between driveways.

2.51. HALLS BEACH, NORTHCOTE POINT



Park Name (official):	Halls Beach					
Reserve Management Plan:	No reserve management plan					
Entrance	Auckland Council sign	North Shore City sign	Pre-North Shore City sign	Inadequate signage	No signage	Notes
Hall Street		✓				Sign on Queen Street entrance to Hall Street.
Other Notes:	<i>Halls Beach</i> borders the Hall Street paper road.					

2.52. HEATH RESERVE, NORTHCOTE



Park Name (official):	Heath Reserve					
Reserve Management Plan:	No reserve management plan					
Entrance	Auckland Council sign	North Shore City sign	Pre-North Shore City sign	Inadequate signage	No signage	Notes
Heath Avenue				✓		Sign says "Walkway to Reserve".
Exmouth Road					✓	No signage for Heath Reserve or stating access to Tuff Crater.
Motorway Buffer Reserve					✓	
Motorway Overpass					✓	
Tuff Crater					✓	Sign about Tuff Crater restoration, but not entrance sign for Heath Reserve.
Other Notes:	<i>Heath Reserve</i> includes part of Exmouth Road. <i>Tuff Crater</i> extends further into the reserve than apparent from being on-site.					

2.53. HELLYERS CREEK RESERVE, BEACH HAVEN / BIRKDALE



Park Name (official):	Hellyers Creek Reserve					
Reserve Management Plan:	Foreshore/Esplanade Reserves, 10 October 1989					
Entrance	Auckland Council sign	North Shore City sign	Pre-North Shore City sign	Inadequate signage	No signage	Notes
John Bracken Way paper road					✓	
Paragon Avenue				✓		Information sign, not entrance sign.
Lancaster Road					✓	
Ranch Avenue (1)					✓	
Ranch Avenue (2)					✓	
Packham Place					✓	
Beach Haven Road					✓	
Kahika Point Reserve					✓	

Entrance	Auckland Council sign	North Shore City sign	Pre-North Shore City sign	Inadequate signage	No signage	Notes
19-21 Kahika Road (WaterCare) / Kahika Road paper road					✓	
Beach Haven Road / Kaipatiki Road Bridge					✓	
Other Notes:	<i>Hellyers Creek Reserve</i> is comprised of six separate parcels of land, in the suburbs of Beach Haven and Birkdale.					

2.54. HIGHGROVE RESERVE, TOTARA VALE



Park Name (official):	Highgrove Reserve					
Reserve Management Plan:	No reserve management plan					
Entrance	Auckland Council sign	North Shore City sign	Pre-North Shore City sign	Inadequate signage	No signage	Notes
Highgrove Lane					✓	
Other Notes:						

2.55. HILDERS PARK, BEACH HAVEN



Park Name (official):	Hilders Park					
Reserve Management Plan:	Hilders Park, September 1989					
Entrance	Auckland Council sign	North Shore City sign	Pre-North Shore City sign	Inadequate signage	No signage	Notes
Beach Haven Road		✓				
Other Notes:	Includes the area known as <i>Larkin's Landing</i> .					

2.56. HINEMOA PARK, BIRKENHEAD



Park Name (official):	Hinemoa Park					
Reserve Management Plan:	Hinemoa Park, September 1989					
Entrance	Auckland Council sign	North Shore City sign	Pre-North Shore City sign	Inadequate signage	No signage	Notes
Hinemoa Street (1)					✓	North of Hinemoa Street, including walkway.
Hinemoa Street (2)		✓				South of Hinemoa Street, north-end of park.
Hinemoa Street (3)					✓	South of Hinemoa Street, south-end of park.
Carpark					✓	
Bridge View Road					✓	Entrance via Bridgeview Road paper road.

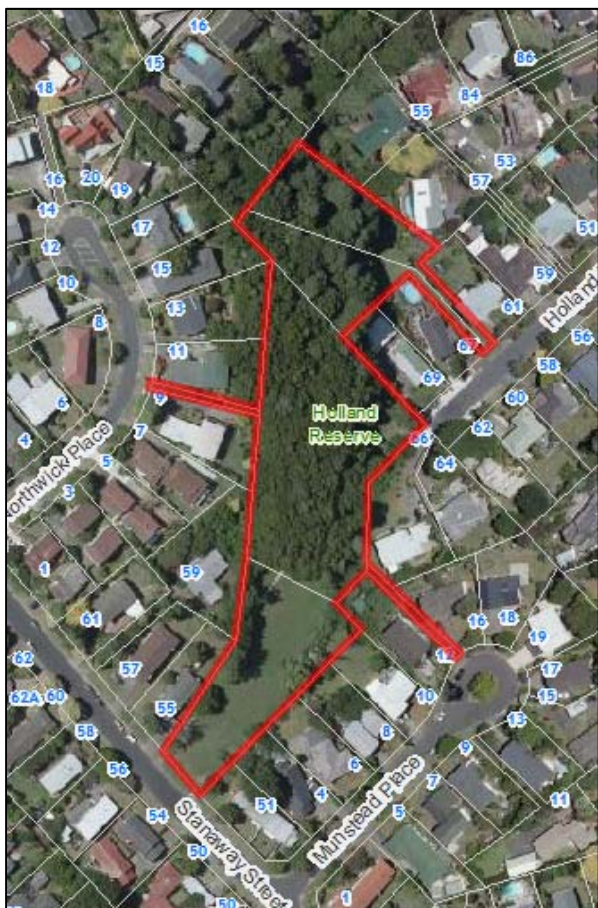
Entrance	Auckland Council sign	North Shore City sign	Pre-North Shore City sign	Inadequate signage	No signage	Notes
Niagara Place					✓	
Tizard Road					✓	Walkway and open area.
Other Notes:	<p><i>Hinemoa Park</i> straddles Hinemoa Street and includes a third piece of land to the east which is only accessible from the foreshore.</p> <p><i>Hinemoa Park</i> includes the land under the Northcote Birkenhead Yacht Club building and the car park along the water edge to the east of Hinemoa Street, but not the wharf.</p>					

2.57. HIWIHAU RESERVE, GLENFIELD



Park Name (official):	Hiwihau Reserve					
Reserve Management Plan:	Eskdale Reserve Network, 1998 Local Amenity Reserves, February 1983					
Entrance	Auckland Council sign	North Shore City sign	Pre-North Shore City sign	Inadequate signage	No signage	Notes
Hiwihau Place		✓				Sign incorrectly refers to reserve as <i>Eskdale Reserve</i> .
Park Reserve					✓	
Other Notes:	<p><i>Hiwihau Reserve</i> is part of the <i>Eskdale Reserve Network</i>. GIS is not displaying <i>Hiwihau Reserve</i>, instead identifying its land as part of <i>Eskdale Reserve</i> and <i>Kelmar Scenic Reserve</i>. The <i>Eskdale Reserve Network</i> reserve management plan is clear that <i>Hiwihau Reserve</i> exists as a reserve in its own right.</p> <p>► I recommend that GIS and signage be updated to identify Lot 51 DP 80162, Lot 53 DP 80161 and Lot 4 DP 96894 as <i>Hiwihau Reserve</i>, part of the <i>Eskdale Reserve Network</i>.</p>					

2.58. HOLLAND RESERVE, HILLCREST



Park Name (official):	Holland Reserve					
Reserve Management Plan:	Local Amenity Reserves, February 1983					
Entrance	Auckland Council sign	North Shore City sign	Pre-North Shore City sign	Inadequate signage	No signage	Notes
Holland Road (1)		✓				
Holland Road (2)			✓			Between 61 and 67 Holland Road.
Northwick Place					✓	
Stanaway Street		✓				
Munstead Place		✓				Signposted but could be intimidating to use as appears to be private property.
Other Notes:						



Northwick Place entrance – Gap between properties, blocked by trees.

2.59. HOLYOAKE PLACE RESERVE, BIRKENHEAD



Park Name (official):	Holyoake Place Reserve					
Reserve Management Plan:	No reserve management plan					
Entrance	Auckland Council sign	North Shore City sign	Pre-North Shore City sign	Inadequate signage	No signage	Notes
Holyoake Place					✓	
Porrit Avenue					✓	
Other Notes:						

2.60. HOMEWOOD RESERVE, CHATSWOOD



Park Name (official):	Homewood Reserve					
Reserve Management Plan:	Chatswood and Homewood Reserves, September 1998					
Entrance	Auckland Council sign	North Shore City sign	Pre-North Shore City sign	Inadequate signage	No signage	Notes
Homewood Place					✓	
Mosman Place					✓	
Chatswood Reserve					✓	
Other Notes:						

2.61. INWARDS RESERVE, BIRKDALE



Park Name (official):	Inwards Reserve					
Reserve Management Plan:	Inwards Reserve, May 1997					
Entrance	Auckland Council sign	North Shore City sign	Pre-North Shore City sign	Inadequate signage	No signage	Notes
Salisbury Road (1)			✓			
Salisbury Road (2)					✓	Not obvious entrance as grass strip between driveways.
Other Notes:	▶ I recommend that unnamed reserve LOT 6 DP 203146 be included in <i>Inwards Reserve</i> .					



Southern Salisbury Road entrance – Grass strip between driveways.

2.62. ISLAND BAY RESERVE, BEACH HAVEN



Park Name (official):	Island Bay Reserve					
Reserve Management Plan:	Foreshore/Esplanade Reserves, 10 October 1989					
Entrance	Auckland Council sign	North Shore City sign	Pre-North Shore City sign	Inadequate signage	No signage	Notes
Island Bay Road		✓				Entrance at top of reserve incorrectly reads "Island Bay".
Carpark / Playground					✓	
Moller Street					✓	
Other Notes:	<p><i>Island Bay Reserve</i> is comprised of two separate pieces of land. The Eastern portion of reserve land (including beach) is owned by WaterCare.</p> <p>According to GIS, <i>Island Bay Reserve</i> does not include the car park or playground area.</p> <ul style="list-style-type: none"> ► I recommend that the boundary of <i>Island Bay Reserve</i> is redrawn to include the car park, playground and grass area. 					

2.63. JACARANDA AVENUE ESPLANADE RESERVE, BEACH HAVEN



Park Name (official):	Jacaranda Avenue Esplanade Reserve					
Reserve Management Plan:	Foreshore/Esplanade Reserves, 10 October 1989 Jacaranda Avenue Esplanade Reserve [date unknown]					
Entrance	Auckland Council sign	North Shore City sign	Pre-North Shore City sign	Inadequate signage	No signage	Notes
Jacaranda Avenue					✓	
Brigantine Drive (1)					✓	Trees and grass that appear to be private property as next to driveway.
Brigantine Drive (2)					✓	

Entrance	Auckland Council sign	North Shore City sign	Pre-North Shore City sign	Inadequate signage	No signage	Notes
Eucalyptus Place					✓	Trees and grass between driveways. Wooden barrier has been erected.
Rosecamp Road Foreshore Reserve					✓	
Other Notes:						

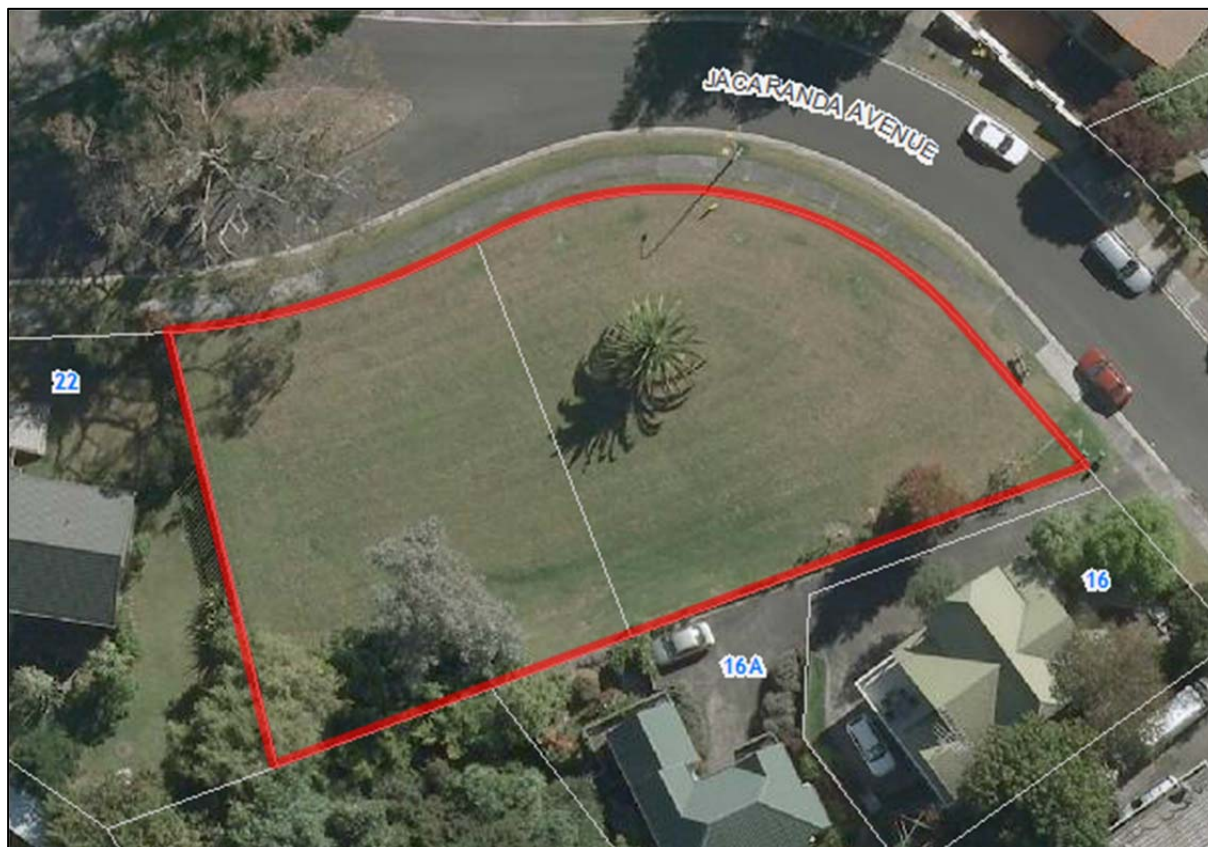


Jacaranda Avenue entrance – Trees and grass between two driveways.



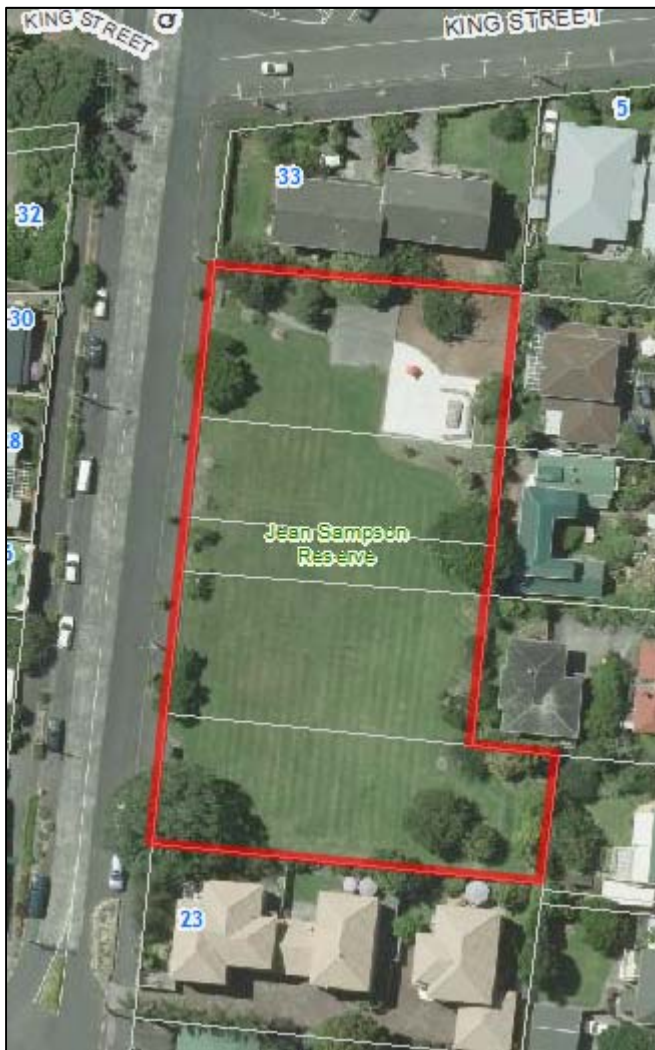
Eucalyptus Place entrance – Grass and trees between driveways. A wooden barrier has been erected behind trees, blocking access.

2.64. JACARANDA AVENUE RESERVE, BEACH HAVEN



Park Name (official):	Jacaranda Avenue Reserve					
Reserve Management Plan:	No reserve management plan					
Entrance	Auckland Council sign	North Shore City sign	Pre-North Shore City sign	Inadequate signage	No signage	Notes
Jacaranda Avenue					✓	
Other Notes:						

2.65. JEAN SAMPSON RESERVE, NORTHCOTE POINT



Park Name (official):	Jean Sampson Reserve					
Reserve Management Plan:	No reserve management plan					
Entrance	Auckland Council sign	North Shore City sign	Pre-North Shore City sign	Inadequate signage	No signage	Notes
Queen Street		✓				
Other Notes:						

2.66. JOHN KAY PARK, BIRKENHEAD



Park Name (official):	John Kay Park					
Reserve Management Plan:	No reserve management plan					
Entrance	Auckland Council sign	North Shore City sign	Pre-North Shore City sign	Inadequate signage	No signage	Notes
Waipa Street					✓	
Verran Road					✓	
Other Notes:	Some maps list this reserve as <i>John G Kay Park</i> .					

2.67. KAHIKA POINT RESERVE, BIRKDALE



Park Name (official):	Kahika Point Reserve					
Reserve Management Plan:	Kahika Point Reserve, September 1989					
Entrance	Auckland Council sign	North Shore City sign	Pre-North Shore City sign	Inadequate signage	No signage	Notes
Kahika Road		✓				Sign says "Walkway to Kahika Point Reserve".
Bay Park Place		✓				Sign says "Walkway to Kahika Point Reserve".
Hellyers Creek Reserve					✓	
Other Notes:	<p>Lot 4 DP 173430 is council owned and should be part of <i>Kahika Point Reserve</i> as it includes part of the path from Bay Park Place.</p> <p>► Include Lot 4 DP 173430 in <i>Kahika Point Reserve</i> if it isn't already, then update GIS.</p>					

2.68. KAIPATIKI ESPLANADE RESERVE, BAYVIEW



Park Name (official):	Kaipatiki Esplanade Reserve					
Reserve Management Plan:	No reserve management plan					
Entrance	Auckland Council sign	North Shore City sign	Pre-North Shore City sign	Inadequate signage	No signage	Notes
Manuka Reserve					✓	
Standish Reserve					✓	
Pemberton Avenue (1)					✓	
Pemberton Avenue (2)					✓	
Fernlea Rise					✓	

Entrance	Auckland Council sign	North Shore City sign	Pre-North Shore City sign	Inadequate signage	No signage	Notes
Witherford Scenic Reserve					✓	
Kaipatiki Road					✓	
Other Notes:						

2.69. KAIPATIKI CREEK RESERVE, GLENFIELD



Park Name (official):	Kaipatiki Creek Reserve					
Reserve Management Plan:	No reserve management plan					
Entrance	Auckland Council sign	North Shore City sign	Pre-North Shore City sign	Inadequate signage	No signage	Notes
Kaipatiki Road					✓	
Other Notes:	This reserve is an unnamed on GIS. ► I recommend that GIS be updated with the name of this reserve.					

2.70. KAIPATIKI PARK, GLENFIELD



Park Name (official):	Kaipatiki Park					
Reserve Management Plan:	Kaipatiki Park, August 1993					
Entrance	Auckland Council sign	North Shore City sign	Pre-North Shore City sign	Inadequate signage	No signage	Notes
Kaipatiki Road		✓				
Waverley Avenue		✓				
Segedin Place		✓				
Other Notes:	Part of Glenfield College driveway is on reserve land.					

2.71. KAKA STREET RESERVE, NORTHCOTE



Park Name (official):	Kaka Street Reserve					
Reserve Management Plan:	No reserve management plan					
Entrance	Auckland Council sign	North Shore City sign	Pre-North Shore City sign	Inadequate signage	No signage	Notes
Kaka Street					✓	
Martin Crescent					✓	
Other Notes:						



Kaka Street entrance – Unmarked driveway that appears to be private property due to the building on the reserve.

2.72. KAURI GLEN RESERVE, NORTHCOTE



Park Name (official):	Kauri Glen Reserve					
Reserve Management Plan:	Kauri Glen Reserve and Cecil Eady Bush, November 1999 (draft)					
Entrance	Auckland Council sign	North Shore City sign	Pre-North Shore City sign	Inadequate signage	No signage	Notes
Raymond Terrace					✓	
Tui Glen Road (1)		✓				Main entrance. Sign in carpark. No signage at road since it was removed in 2009.
Tui Glen Road (2)					✓	Western entrance. Entrance not obvious as strip of grass and trees between houses. See photo below.
Park Avenue					✓	Access via Park Avenue road reserve, but no signage.
Kauri Glen Road		✓				Sign inside entrance, not at roadside, so not obvious, particularly as Northcote College sign at entrance.
Northcote College					✓	
Gladstone Road			✓			

Entrance	Auckland Council sign	North Shore City sign	Pre-North Shore City sign	Inadequate signage	No signage	Notes
Cecil Eady Bush					✓	
Other Notes:	<p>Part of Tui Glen Road and residential driveways are included in <i>Kauri Glen Reserve</i>.</p> <p>The draft reserve management plan includes <i>City View Terrace Reserve</i> as part of <i>Kauri Glen Reserve</i>, however I have kept it separate as this may be an error.</p> <p>GIS is incorrectly including <i>Cecil Eady Bush</i> within the boundary of <i>Kauri Glen Reserve</i>. In the above map, the area west of the yellow line is <i>Kauri Glen Reserve</i>; east of the yellow line <i>Cecil Eady Bush</i>.</p> <ul style="list-style-type: none"> ▶ The boundary needs to be updated to include Allotment 345 Parish of Takapuna (open area bordering Northcote college) as part of <i>Kauri Glen Reserve</i>, as per the management plan. ▶ The back parts of 29B and 35 Aorangi Place (Lot 4 DP 456975, Lot 2 DP 456975) are an unnamed reserve and should be officially transferred into either <i>City View Terrace Reserve</i> or <i>Kauri Glen Reserve</i>. ▶ I recommend that GIS and signage for <i>Cecil Eady Bush</i> and <i>Kauri Glen Reserve</i> are updated to reflect the boundary, as per the reserve management plan. 					



Tui Glen Road western entrance – grass between properties.

2.73. KAURI PARK, BIRKENHEAD / BEACH HAVEN



Park Name (official):	Kauri Park					
Reserve Management Plan:	No reserve management plan					
Entrance	Auckland Council sign	North Shore City sign	Pre-North Shore City sign	Inadequate signage	No signage	Notes
Rangitira Road (1)					✓	Entrance to western section down private driveway. See photo below. Any sign erected here must include details on the history and importance of <i>Søren Christensen Grove</i> (KT/2012/169).
Rangitira Road (2)		✓				Entrance to eastern section.

Entrance	Auckland Council sign	North Shore City sign	Pre-North Shore City sign	Inadequate signage	No signage	Notes
Kauri Road (1)					✓	Northern entrance. Not obvious entrance as bush.
Kauri Road (2)					✓	West side of Kauri Road.
Kauri Road (3)			✓			Northern entrance to Kauri Road paper road.
Kauri Road (4)					✓	Southern entrance to Kauri Road paper road.
Muriel Fisher Reserve					✓	
Other Notes:	<p><i>Kauri Park</i> is comprised of two sections of land, separated by <i>Muriel Fisher Reserve</i>. The western section is in Beach Haven and the eastern section is in Birkenhead.</p> <p>A third section of land is called <i>Kauri Park Extn</i> (see next page).</p> <p>A nikau grove within the western section was named <i>Søren Christensen Grove</i> by the Kaipatiki Local Board in June 2012, but it is not showing as such on GIS (requested as part of resolution KT/2012/169).</p> <ul style="list-style-type: none"> ▶ I recommend that <i>Søren Christensen Grove</i> is marked on GIS. ▶ Confirm whether Lot 3 DP 175875 is supposed to be included as part of <i>Kauri Park</i> (as per GIS) or <i>Muriel Fisher Reserve</i>. 					



Rangitira Road entrance to western section of Kauri Park – Entrance down private driveway to left of letterbox.

2.74. KAURI PARK EXTN, BIRKENHEAD



Park Name (official):	Kauri Park Extn					
Reserve Management Plan:	No reserve management plan					
Entrance	Auckland Council sign	North Shore City sign	Pre-North Shore City sign	Inadequate signage	No signage	Notes
Kauri Road					✓	Entrance via Kauri Road paper road.
Other Notes:						

2.75. KAURI POINT CENTENNIAL PARK, CHATSWOOD



Park Name (official):	Kauri Point Centennial Park					
Reserve Management Plan:	Kauri Point Centennial Park, 10 October 1989					
Entrance	Auckland Council sign	North Shore City sign	Pre-North Shore City sign	Inadequate signage	No signage	Notes
Onetaunga Road (1)			✓			
Onetaunga Road (2)			✓			
Onetaunga Road (3)			✓			
Chelsea Estate Heritage Park					✓	
Other Notes:						

2.76. KAURI POINT DOMAIN, CHATSWOOD



Park Name (official):	Kauri Point Domain					
Reserve Management Plan:	No reserve management plan					
Entrance	Auckland Council sign	North Shore City sign	Pre-North Shore City sign	Inadequate signage	No signage	Notes
Balmain Road			✓			
Other Notes:						

2.77. KEITH SMITH AVENUE RESERVE, BEACH HAVEN



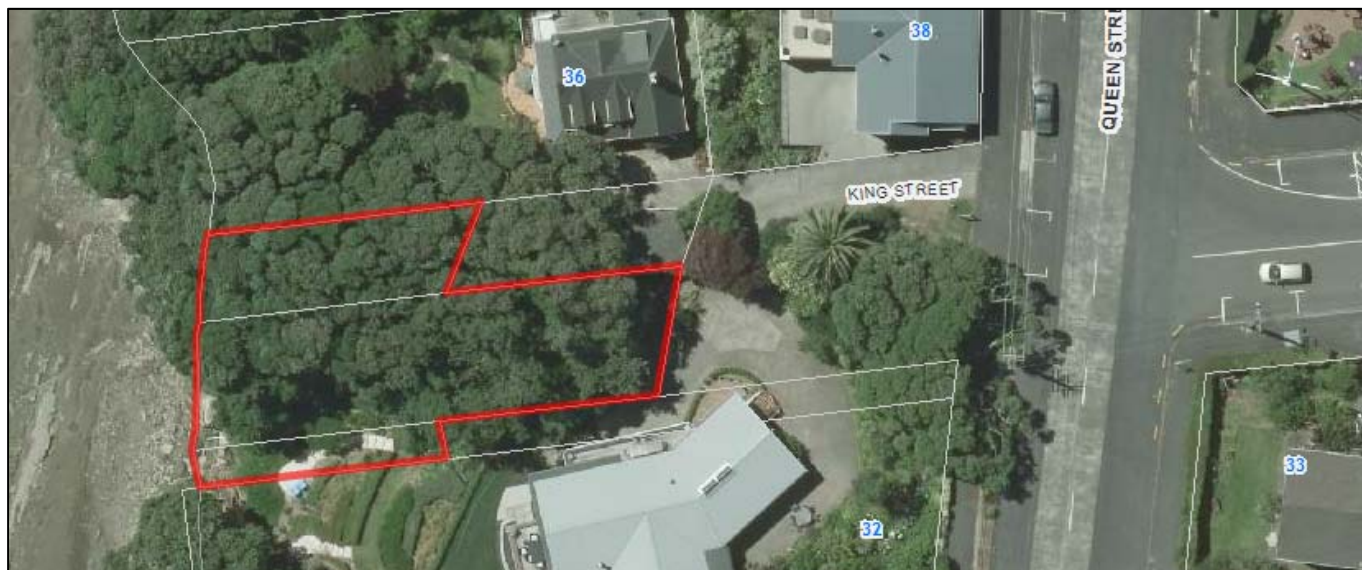
Park Name (official):	Keith Smith Avenue Reserve					
Reserve Management Plan:	No reserve management plan					
Entrance	Auckland Council sign	North Shore City sign	Pre-North Shore City sign	Inadequate signage	No signage	Notes
Keith Smith Avenue		✓				Sign calls the reserve "Alan Tanner Reserve".
Other Notes:	<p>This reserve is comprised of two pieces of land, separated by Dakota Avenue paper road.</p> <ul style="list-style-type: none"> Clarification is required as to whether this reserve is named "Keith Smith Avenue Reserve" or "Alan Tanner Reserve" and GIS or signage must then be updated to reflect the correct name. 					

2.78. KELMAR SCENIC RESERVE, GLENFIELD



Park Name (official):	Kelmar Scenic Reserve					
Reserve Management Plan:	Eskdale Reserve Network, 1998 Local Amenity Reserves, February 1983					
Entrance	Auckland Council sign	North Shore City sign	Pre-North Shore City sign	Inadequate signage	No signage	Notes
Park Reserve					✓	
Domain Road paper road					✓	
Other Notes:	<p><i>Kelmar Scenic Reserve</i> is part of the <i>Eskdale Reserve Network</i>. GIS identifies Lot 4 DP 96894 as part of <i>Kelmar Scenic Reserve</i>, whereas the management plan identifies it as part of <i>Hiwihau Reserve</i>.</p> <p>► I recommend that GIS be updated to identify Lot 4 DP 96894 as part of <i>Hiwihau Reserve</i>.</p>					

2.79. KING STREET RESERVE, NORTHCOTE POINT



Park Name (official):	King Street Reserve					
Reserve Management Plan:	No reserve management plan					
Entrance	Auckland Council sign	North Shore City sign	Pre-North Shore City sign	Inadequate signage	No signage	Notes
King Street				✓		Sign on Queen Street entrance to King Street paper road says "Public Access to Reserve and Beach".
Other Notes:	<i>King Street Reserve</i> borders the King Street paper road.					

2.80. KITEWAO STREET ESPLANADE RESERVE, NORTHCOTE



Park Name (official):	Kitewao Street Esplanade Reserve					
Reserve Management Plan:	No reserve management plan					
Entrance	Auckland Council sign	North Shore City sign	Pre-North Shore City sign	Inadequate signage	No signage	Notes
Akoranga Road					✓	
Kitewao Street (1)					✓	Western entrance. Access down driveway which appears to be private but is part of reserve.
Kitewao Street (2)					✓	Eastern entrance.
Other Notes:						



Kitewao Street entrance (western) - Driveway is on reserve. Path to Smiths Bush Scenic Reserve off driveway.

2.81. LANCELOT RESERVE, GLENFIELD



Park Name (official):	Lancelot Reserve					
Reserve Management Plan:	No reserve management plan					
Entrance	Auckland Council sign	North Shore City sign	Pre-North Shore City sign	Inadequate signage	No signage	Notes
Lancelot Place		✓				
Neal Avenue		✓				
Other Notes:						

2.82. LAUDERDALE RESERVE, BIRKENHEAD



Park Name (official):	Lauderdale Reserve (formally Lauderdale Road Reserve)					
Reserve Management Plan:	Eskdale Reserve Network, 1998 Lauderdale Road Reserve, September 1989					
Entrance	Auckland Council sign	North Shore City sign	Pre-North Shore City sign	Inadequate signage	No signage	Notes
Lauderdale Road (1)			✓			
Lauderdale Road (2)		✓				
Francis Kendall Reserve					✓	
Eskdale Reserve					✓	
Other Notes:	Lauderdale Reserve is part of the <i>Eskdale Reserve Network</i> . Lauderdale Reserve includes the Kaipatiki Project buildings.					

2.83. LEIDEN RESERVE, TOTARA VALE




Park Name (official):	Leiden Reserve					
Reserve Management Plan:	No reserve management plan					
Entrance	Auckland Council sign	North Shore City sign	Pre-North Shore City sign	Inadequate signage	No signage	Notes
Leiden Place					✓	
Lambrown Drive					✓	
Other Notes:						

2.84. LEIGH SCENIC RESERVE, BAYVIEW



Park Name (official):	Leigh Scenic Reserve					
Reserve Management Plan:	Lynn and Leigh Reserves, December 1995 Local Amenity Reserves, February 1983					
Entrance	Auckland Council sign	North Shore City sign	Pre-North Shore City sign	Inadequate signage	No signage	Notes
Corner Leigh Terrace / Moriggia Place		✓				
Moriggia Place					✓	
Bryers Place		✓				
Randal Place					✓	Not obvious entrance as strip of trees between driveways.
Ramonda Close		✓				Sign at roadside. Entrance up shared driveway.
Lynn Road		✓				Sign incorrectly says "Lynn Scenic Reserve".
Lynn Reserve					✓	
Anne McLean Drive		✓				

Entrance	Auckland Council sign	North Shore City sign	Pre-North Shore City sign	Inadequate signage	No signage	Notes
Eugen Place					✓	Not obvious entrance as grass strip between properties. See photo below.
Other Notes:	<p>There is also a <i>Leigh Scenic Reserve</i> in Leigh.</p> <p>In the map for <i>Lynn Reserve</i> below and on page 135, the red line indicates the boundary according to GIS, however the reserve management plan for <i>Lynn Reserve</i> and <i>Leigh Scenic Reserve</i> has the border at the yellow line (almost exactly the bush line). All reserve land south of the yellow line is actually part of <i>Leigh Scenic Reserve</i>.</p>  <p>► I recommend that GIS and signage for <i>Lynn Reserve</i> and <i>Leigh Scenic Reserve</i> is updated to reflect the boundaries in the reserve management plan.</p>					



Eugen Place entrance – grass strip between house and fence.



Randal Place entrance – trees/scrub between driveways.

2.85. LENIHAN RESERVE, NORTHCOTE



Park Name (official):	Lenihan Reserve					
Reserve Management Plan:	No reserve management plan					
Entrance	Auckland Council sign	North Shore City sign	Pre-North Shore City sign	Inadequate signage	No signage	Notes
Lenihan Street		✓				
Lake Road					✓	
Other Notes:						

2.86. LE ROYS BUSH RESERVE, BIRKENHEAD / NORTHCOTE



Park Name (official):	Le Roys Bush Reserve					
Reserve Management Plan:	Little Shoal Bay and Le Roys Bush Reserves, December 1997					
Entrance	Auckland Council sign	North Shore City sign	Pre-North Shore City sign	Inadequate signage	No signage	Notes
Onewa Road		✓				
Enterprise Street					✓	
Hinemoa Street (1)					✓	Western entrance. Not obvious entrance as blocked by carport and hedge. See photo below.
Hinemoa Street (2)		✓				Eastern entrance.
Le Roy Terrace		✓				
Glade Place						Access via paper road extension of Glade Place.
Little Shoal Bay Reserve					✓	
Valley Road		✓				Access via paper road extension of Valley Road.

Other Notes:

- ▶ I recommend that Lot 2 DP 210164 be transferred from *Le Roys Bush Reserve* to *Little Shoal Bay*.
- ▶ I recommend that unnamed scenic reserve Section 2 SO 453062 (43 Birkenhead Avenue) be included in *Le Roys Bush Reserve*.
- ▶ I recommend that unnamed scenic reserve Section 2 SO 453186 (251 Hinemoa Avenue) be included in *Le Roys Bush Reserve*.
- ▶ I recommend that unnamed scenic reserve Section 3 SO 453186 (269 Hinemoa Avenue) be included in *Le Roys Bush Reserve*.
- ▶ The majority of LOT 2 DP 120226 appears to be reserve land but not included within the GIS boundary of *Le Roys Bush Reserve*. If it is council-owned then I recommend that it be included within *Le Roys Bush Reserve*.



Hinemoa Street western entrance – Reserve includes half of carport and half of hedge.

2.87. LINDISFARNE, NORTHCOTE



Park Name (official):	Lindisfarne					
Reserve Management Plan:	No reserve management plan					
Entrance	Auckland Council sign	North Shore City sign	Pre-North Shore City sign	Inadequate signage	No signage	Notes
Corner Lake Road / Tonar Street		✓				Sign refers to "Lindisfarne Reserve".
Tonar Street					✓	No sign at driveway.
Other Notes:						

2.88. LINLEY RESERVE, HILLCREST




Park Name (official):	Linley Reserve					
Reserve Management Plan:	Local Amenity Reserves, February 1983					
Entrance	Auckland Council sign	North Shore City sign	Pre-North Shore City sign	Inadequate signage	No signage	Notes
Linley Place		✓				
Mountbatten Avenue (1)		✓				
Mountbatten Avenue (2)		✓				
Hume Drive		✓				
Eban Avenue		✓				
Other Notes:						

2.89. LITTLE SHOAL BAY RESERVE, BIRKENHEAD / NORTHCOTE / NORTHCOTE POINT



Park Name (official):	Little Shoal Bay Reserve					
Reserve Management Plan:	Little Shoal Bay and Le Roys Bush Reserves, December 1997					
Entrance	Auckland Council sign	North Shore City sign	Pre-North Shore City sign	Inadequate signage	No signage	Notes
Maritime Terrace (1)					✓	North of road.
Maritime Terrace (2)					✓	South of road.
Council Terrace (1)		✓	✓			North of road. Pre-NSCC sign reads "Dudding Park".
Council Terrace (2)					✓	South of road.

Entrance	Auckland Council sign	North Shore City sign	Pre-North Shore City sign	Inadequate signage	No signage	Notes
Clarence Road		✓				Sign reads "Pedestrian access to Little Shoal Bay".
Church Street					✓	Not obvious entrance as grass/trees between properties. See photo below.
Seaview Avenue (1)		✓				
Seaview Avenue (2)					✓	
Fairfax Avenue					✓	Access via paper road extension of Fairfax Avenue.
Valley Road		✓				Access via paper road extension of Valley Road.
Le Roys Bush Reserve					✓	
Glade Place						Access via paper road extension of Glade Place.
Other Notes:	<p><i>Little Shoal Bay</i> crosses the boundaries of Birkenhead, Northcote and Northcote Point suburbs, and borders <i>Le Roys Bush Reserve</i>. It incorporates the areas known as <i>Luthers Reserve</i> and <i>Dudding Park</i>.</p> <ul style="list-style-type: none"> GIS needs to be updated to include "Dudding Park Sportsfield" within <i>Little Shoal Bay Reserve</i> as it is the name of the sportsfields area and not a reserve in its own right.  <ul style="list-style-type: none"> GIS needs to be updated to remove the name "Maritime Terrace" from the road over the reserve that connects "Maritime Terrace" with "Council Terrace", as it is reserve access, not a legal road. GIS needs to be updated to include the accessway from Clarence Road as part of <i>Little Shoal Bay</i> reserve. I recommend that LOT 2 DP 210164 be transferred from <i>Le Roys Bush Reserve</i> to <i>Little Shoal Bay</i>. 					



Church Street entrance – Grass and trees between driveway/sign and picket fence.

2.90. LITTLE SHOAL BAY FORESHORE RESERVE, BIRKENHEAD / NORTHCOTE POINT



Park Name (official):	Little Shoal Bay Foreshore Reserve					
Reserve Management Plan:	No reserve management plan					
Entrance	Auckland Council sign	North Shore City sign	Pre-North Shore City sign	Inadequate signage	No signage	Notes
Foreshore					✓	
Other Notes:	Little Shoal Bay Foreshore Reserve is comprised of eight separate pieces of land, all of which are only accessible via the foreshore or private property.					

2.91. LOCKET RESERVE, GLENFIELD



Park Name (official):	Locket Reserve					
Reserve Management Plan:	No reserve management plan					
Entrance	Auckland Council sign	North Shore City sign	Pre-North Shore City sign	Inadequate signage	No signage	Notes
Locket Road					✓	
Archers Road		✓				
Other Notes:						

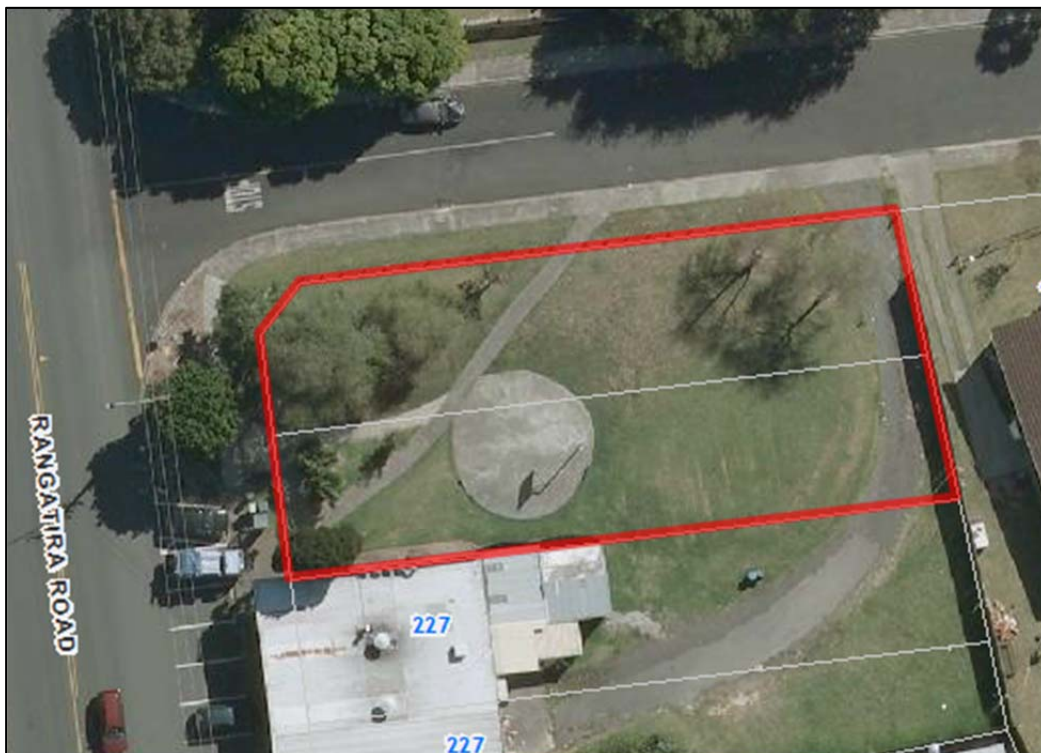
2.92. LYNN RESERVE, BAYVIEW



Park Name (official):	Lynn Reserve					
Reserve Management Plan:	Lynn and Leigh Reserves, December 1995 Local Amenity Reserves, February 1983					
Entrance	Auckland Council sign	North Shore City sign	Pre-North Shore City sign	Inadequate signage	No signage	Notes
Lynn Road (1)					✓	Northern side of Lynn Road.
Lynn Road (2)	✓					Southern side of Lynn Road.
Glendhu Road					✓	Sign says "Glenfield Coastal Walkway".
Kereru Reserve						Kereru Reserve is outside of the Kaipatiki Local Board area.

Entrance	Auckland Council sign	North Shore City sign	Pre-North Shore City sign	Inadequate signage	No signage	Notes
Manuka Reserve				✓		Directional signage says "Manuka Boat Ramp".
Leigh Scenic Reserve					✓	
Other Notes:	<p><i>Lynn Reserve</i> is comprised of two parcels of land which straddle Lynn Road.</p> <p>Part of Glendhu Road is reserve land.</p> <p>In the above map, the red line indicates the boundary according to GIS, however the reserve management plan for <i>Lynn Reserve</i> and <i>Leigh Scenic Reserve</i> has the border at the yellow line (almost exactly the bush line). All reserve land south of the yellow line is actually part of <i>Leigh Scenic Reserve</i>.</p> <ul style="list-style-type: none"> ▶ I recommend that GIS and signage for <i>Lynn Reserve</i> and <i>Leigh Scenic Reserve</i> is updated to reflect the boundaries in the reserve management plan. 					

2.93. LYSANDER CRESCENT RESERVE, BEACH HAVEN



Park Name (official):	Lysander Crescent Reserve					
Reserve Management Plan:	No reserve management plan					
Entrance	Auckland Council sign	North Shore City sign	Pre-North Shore City sign	Inadequate signage	No signage	Notes
Lysander Crescent					✓	
Corner Lysander Crescent / Rangatira Road		✓				Sign incorrectly calls reserve "Lysander Reserve".
Rangatira Road					✓	
Other Notes:						

2.94. MANUKA RESERVE, BAYVIEW



Park Name (official):	Manuka Reserve					
Reserve Management Plan:	Local Amenity Reserves, February 1983					
Entrance	Auckland Council sign	North Shore City sign	Pre-North Shore City sign	Inadequate signage	No signage	Notes
Manuka Road (1)		✓				Main entrance.
Manuka Road (2)					✓	Between 215-217 Manuka Road.
Kaipatiki Esplanade Reserve					✓	
Houston Place (1)					✓	

Reserve Management Plan:	Local Amenity Reserves, February 1983					
Entrance	Auckland Council sign	North Shore City sign	Pre-North Shore City sign	Inadequate signage	No signage	Notes
Houston Place (2)		✓				
Hale Crescent (1)					✓	
Hale Crescent (2)					✓	
Thistledew Place		✓				
Hotspur Place					✓	
Lynn Reserve					✓	
Other Notes:	<p>Driveway to estuary and the turning/parking area at bottom of <i>Manuka Road</i> are both reserve land.</p> <ul style="list-style-type: none"> ▶ Both Houston Place accessways are part of <i>Manuka Reserve</i> and this should be reflected on GIS. 					

2.95. MANUKA NEIGHBOURHOOD RESERVE, BAYVIEW



Park Name (official):	Manuka Neighbourhood Reserve					
Reserve Management Plan:	No reserve management plan					
Entrance	Auckland Council sign	North Shore City sign	Pre-North Shore City sign	Inadequate signage	No signage	Notes
Manuka Road					✓	
Other Notes:	Part of neighbour's driveway is on reserve land. Potential for an easement across private property to allow access through to <i>Pemberton Reserve</i> .					

2.96. MARLBOROUGH PARK, GLENFIELD



Park Name (official):	Marlborough Park					
Reserve Management Plan:	Marlborough Park, July 1993					
Entrance	Auckland Council sign	North Shore City sign	Pre-North Shore City sign	Inadequate signage	No signage	Notes
Chartwell Avenue		✓				
Archers Road (1)					✓	
Archers Road (2)					✓	
Edgeworth Road		✓				
Ramillies Place		✓				

Entrance	Auckland Council sign	North Shore City sign	Pre-North Shore City sign	Inadequate signage	No signage	Notes
Chartwell Shops					✓	
Other Notes:	<ul style="list-style-type: none"> ▶ The GIS boundary for <i>Marlborough Park</i> needs to be updated to include the accessway from Edgeworth Road. 					

2.97. MICK STANLEY MEMORIAL RESERVE, CHATSWOOD



Park Name (official):	Mick Stanley Memorial Reserve					
Reserve Management Plan:	No reserve management plan					
Entrance	Auckland Council sign	North Shore City sign	Pre-North Shore City sign	Inadequate signage	No signage	Notes
Corner Murano Place / Chelsea View Drive		✓				
Other Notes:						

2.98. MCFETRIDGE PARK, HILLCREST



Park Name (official):	McFetridge Park					
Reserve Management Plan:	McFetridge Park, February 1993					
Entrance	Auckland Council sign	North Shore City sign	Pre-North Shore City sign	Inadequate signage	No signage	Notes
Archers Road		✓				
Velma Road (1)					✓	
Velma Road (2)		✓				
Other Notes:						

2.99. MONARCH PARK, HILLCREST



Park Name (official):	Monarch Park					
Reserve Management Plan:	Local Amenity Reserves, February 1983					
Entrance	Auckland Council sign	North Shore City sign	Pre-North Shore City sign	Inadequate signage	No signage	Notes
Moore Street					✓	
Mannering Place					✓	
Monarch Avenue (1)		✓				
Monarch Avenue (2)		✓				
McDowell Crescent				✓		"Walkway" sign.
Other Notes:	▶ The <i>Monarch Park</i> boundary in GIS needs to be updated to include the track from the NE corner of the reserve to both Mannering Place and Monarch Avenue, as per the reserve management plan.					

2.100. MOTORWAY BUFFER RESERVE, NORTHCOTE



Park Name (official):	Motorway Buffer Reserve					
Reserve Management Plan:	No reserve management plan					
Entrance	Auckland Council sign	North Shore City sign	Pre-North Shore City sign	Inadequate signage	No signage	Notes
Heath Reserve					✓	
Other Notes:						

2.101. MURIEL FISHER RESERVE, BEACH HAVEN



Park Name (official):	Tarralgon Reserve					
Reserve Management Plan:	No reserve management plan					
Entrance	Auckland Council sign	North Shore City sign	Pre-North Shore City sign	Inadequate signage	No signage	Notes
Island Bay Road	✓					Sign reads "Muriel Fisher Reserve".
Kauri Park					✓	

Entrance	Auckland Council sign	North Shore City sign	Pre-North Shore City sign	Inadequate signage	No signage	Notes
Balmain Road					✓	Appears to be part of <i>Kauri Point Domain</i> as no separate signage.
Other Notes:	<p>This reserve is listed on Council GIS without a name (search for “”).</p> <ul style="list-style-type: none"> ▶ This scenic reserve was gazetted under the name <i>Tarralgon Reserve</i>, but was supposed to be named <i>Muriel Fisher Reserve</i> as per North Shore City Council resolution. This appears to have been a clerical error and the name needs to be corrected to <i>Muriel Fisher Reserve</i>. ▶ Confirm whether Lot 3 DP 175875 is supposed to be included as part of <i>Kauri Park</i> (as per GIS) or <i>Muriel Fisher Reserve</i>. 					

2.102. NEAL RESERVE, GLENFIELD



Park Name (official):	Neal Reserve					
Reserve Management Plan:	No reserve management plan					
Entrance	Auckland Council sign	North Shore City sign	Pre-North Shore City sign	Inadequate signage	No signage	Notes
Neal Avenue					✓	
Other Notes:						

2.103. NELL FISHER RESERVE, BIRKENHEAD



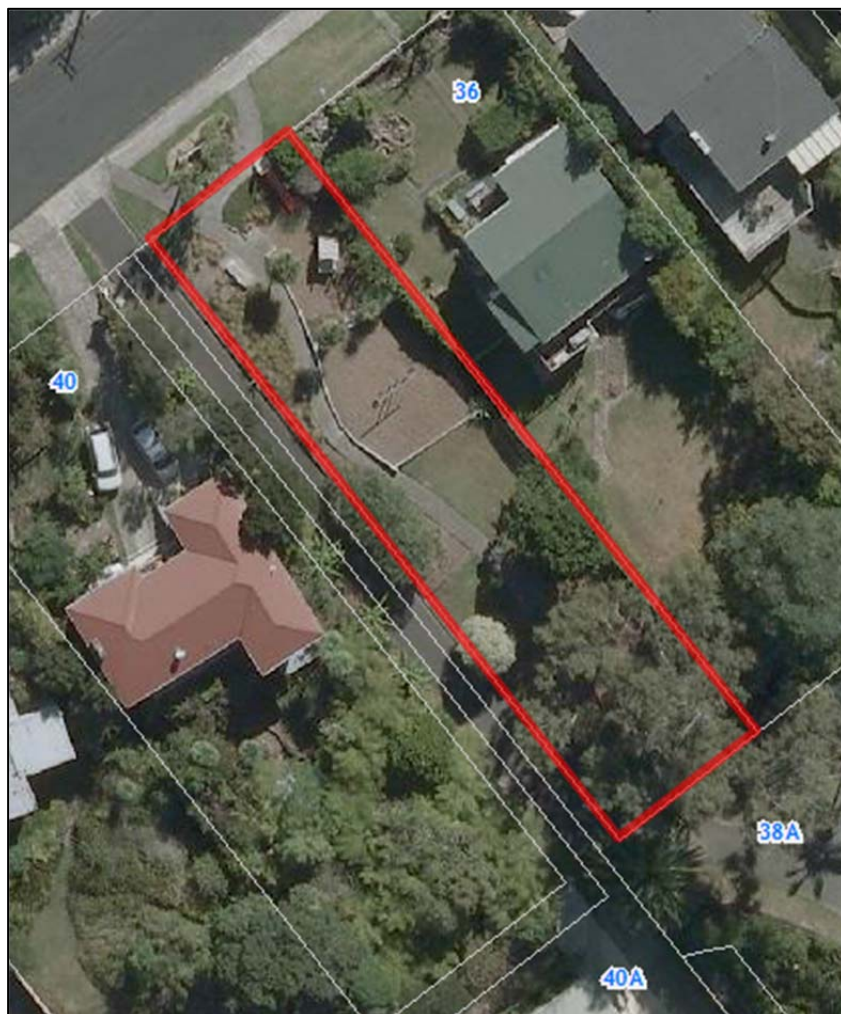
Park Name (official):	Nell Fisher Reserve					
Reserve Management Plan:	Nell Fisher Reserve, [date unknown]					
Entrance	Auckland Council sign	North Shore City sign	Pre-North Shore City sign	Inadequate signage	No signage	Notes
Rawene Road					✓	
Hinemoa Street					✓	Library signage, but not reserve entrance signage.
Corner Rawene Road / Hinemoa Street	✓					
Other Notes:	<ul style="list-style-type: none"> ▶ The GIS boundary needs to be corrected to include Lot 1 DP 58992. ▶ Lot 34 DP 2922 is council-owned and should be officially included as part of the reserve it isn't already, and then GIS can be updated to reflect this. 					

2.104. NEEDLES EYE, BIRKENHEAD



Park Name (official):	Needles Eye					
Reserve Management Plan:	No reserve management plan					
Entrance	Auckland Council sign	North Shore City sign	Pre-North Shore City sign	Inadequate signage	No signage	Notes
Awanui Street					✓	
Other Notes:						

2.105. NEPTUNE AVENUE RESERVE, BEACH HAVEN



Park Name (official):	Neptune Avenue Reserve					
Reserve Management Plan:	No reserve management plan					
Entrance	Auckland Council sign	North Shore City sign	Pre-North Shore City sign	Inadequate signage	No signage	Notes
Neptune Avenue			✓			
Sispara Place Reserve					✓	A private driveway separates Neptune Avenue Reserve from Sispara Avenue Reserve.
Other Notes:						

2.106. NIKAU RESERVE, BAYVIEW



Park Name (official):	Nikau Reserve					
Reserve Management Plan:	No reserve management plan					
Entrance	Auckland Council sign	North Shore City sign	Pre-North Shore City sign	Inadequate signage	No signage	Notes
Fernlea Rise					✓	
Witheford Drive					✓	
Arcadia Reserve					✓	
Other Notes:						

2.107. NORMANTON RESERVE, GLENFIELD



Park Name (official):	Normanton Reserve					
Reserve Management Plan:	Local Amenity Reserves, February 1983					
Entrance	Auckland Council sign	North Shore City sign	Pre-North Shore City sign	Inadequate signage	No signage	Notes
Normanton Street (1)		✓				
Normanton Street (2)					✓	Southwestern entrance.
McHardy Place		✓				
Ashfield Road		✓				
Other Notes:	<ul style="list-style-type: none"> ▶ The <i>Normanton Reserve</i> boundary in GIS needs to be updated to include the track from Ashfield Road, as per the reserve management plan. 					

2.108. ODIN PLACE RESERVE, BEACH HAVEN



Park Name (official):	Odin Place Reserve					
Reserve Management Plan:	No reserve management plan					
Entrance	Auckland Council sign	North Shore City sign	Pre-North Shore City sign	Inadequate signage	No signage	Notes
Odin Place					✓	
Hadfield Street Reserve					✓	
Rangatira Road					✓	Private driveway and grass strip are reserve land.
Pluto Place (1)					✓	
Pluto Place (2)					✓	Grass strip up side of house which appears to be private property.
Other Notes:	The <i>Island Bay Park</i> reserve management plan includes <i>Hadfield Street Reserve</i> , <i>Odin Place Reserve</i> and part of <i>Island Bay Reserve</i> . I am unsure of the status of this management plan and whether the reserve names in GIS are valid.					



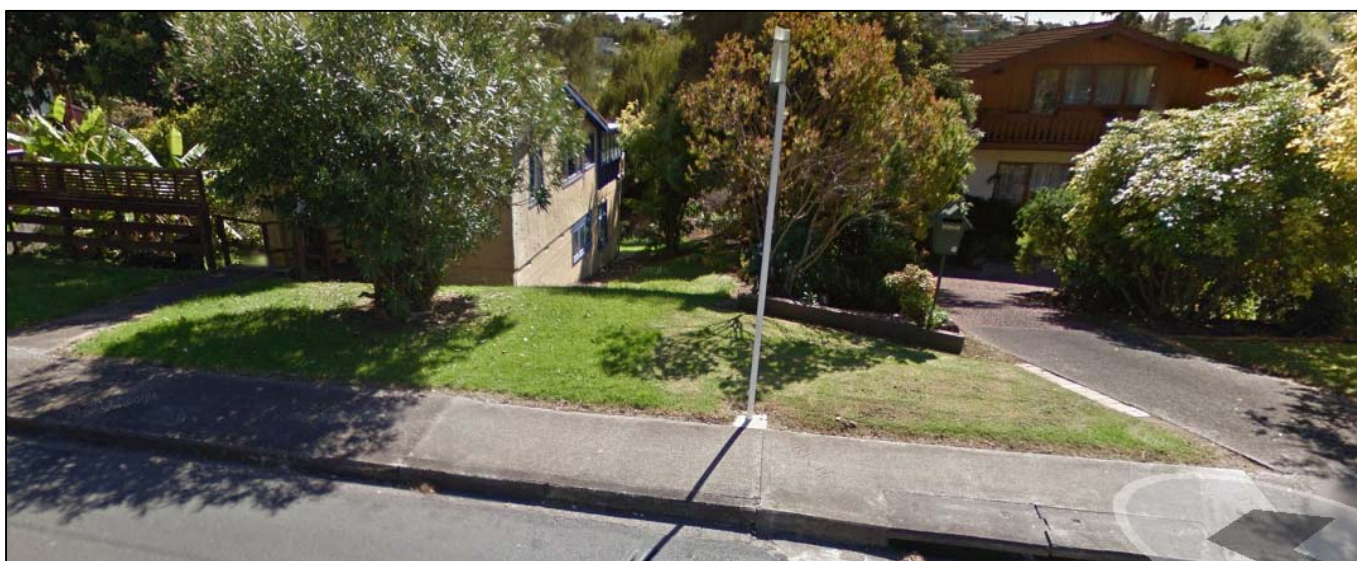
Rangatira Road entrance – Privately-used driveway and grass strip are the entrance to the reserve.

2.109. ONEPOTO DOMAIN, NORTHCOTE



Park Name (official):	Onepoto Domain					
Reserve Management Plan:	Onepoto Domain, August 1997					
Entrance	Auckland Council sign	North Shore City sign	Pre-North Shore City sign	Inadequate signage	No signage	Notes
Howard Road				✓		Sign says "walkway".
Puawai Place		✓				
Matanui Street		✓				
Tarahanga Street (1)					✓	Area south of street including track to Rotary Grove.

Entrance	Auckland Council sign	North Shore City sign	Pre-North Shore City sign	Inadequate signage	No signage	Notes
Tarahanga Street (2)					✓	New path.
Tarahanga Street (3)					✓	Unmarked entrance between 10 and 14 Tarahanga Street.
Tarahanga Street (4)		✓				Main entrance to reserve.
Puawai Place		✓				
ToiToi Place					✓	See recommendation below regarding LOT 16 DP 92131.
Exmouth Road		✓				
Sylvan Avenue (1)		✓				Northern entrance.
Sylvan Avenue (2)					✓	Southern entrance. Not obvious as grass strip with trees between properties. See photo below.
Rotary Grove					✓	
Lake Road					✓	
Onewa Road					✓	Entrance not obvious as blocked by bus stop shelter.
Other Notes:	<p><i>Onepoto Domain</i> includes the areas formerly known as Onepoto Basin, Onepoto Stream, Weeks Reserve and Howard Reserve.</p> <ul style="list-style-type: none"> ▶ GIS needs to be updated to reflect the reserve management plan which states that Lot 1 DP 107104 is part of <i>Rotary Grove</i>, not <i>Onepoto Domain</i>. ▶ GIS needs to be updated to reflect the reserve management plan which states that Lot 16 DP 92131 is part of <i>Onepoto Domain</i>, not <i>Rotary Grove</i>. 					



Sylvan Avenue southern entrance – grass strip between properties.

2.110. ONEWA DOMAIN, NORTHCOTE



Park Name (official):	Onewa Domain					
Reserve Management Plan:	Onewa Domain and Smiths Bush Scenic Reserve, May 1993					
Entrance	Auckland Council sign	North Shore City sign	Pre-North Shore City sign	Inadequate signage	No signage	Notes
Northcote Road					✓	
Corner Northcote Road / Akoranga Road					✓	
Akoranga Road		✓				Incorrectly calls reserve "Onewa Domain Sportsfields".

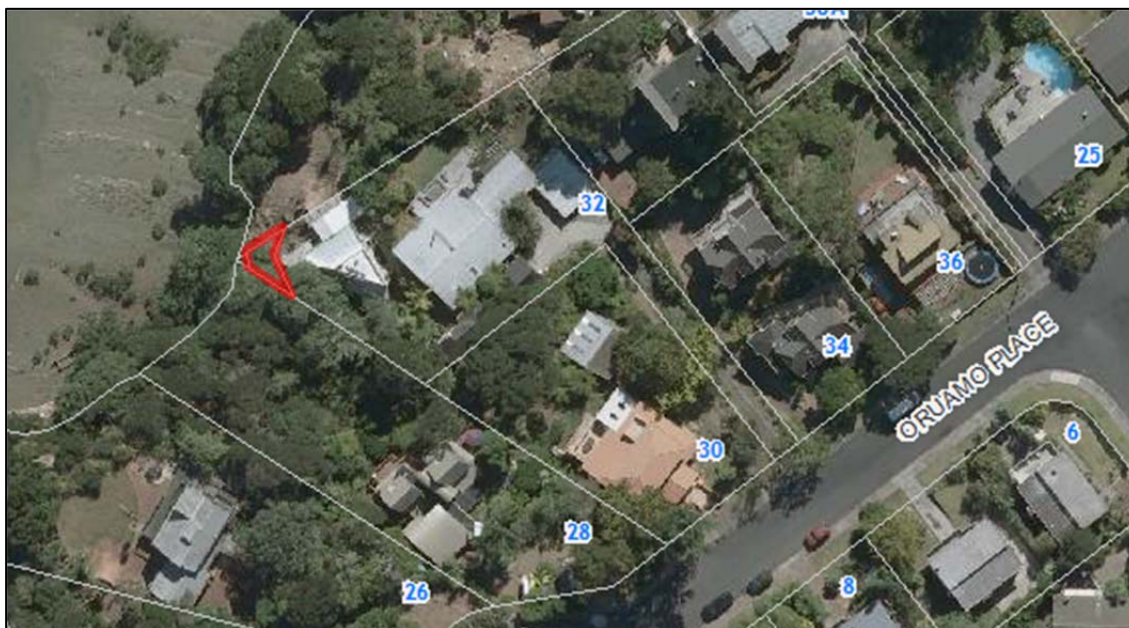
Entrance	Auckland Council sign	North Shore City sign	Pre-North Shore City sign	Inadequate signage	No signage	Notes
Akoranga Road		✓				Incorrectly calls reserve "Onewa Domain Sportsfields".
Smiths Bush Scenic Reserve					✓	
Other Notes:						

2.111. ORUAMO DOMAIN, GLENFIELD



Park Name (official):	Oruamo Domain (also known as Horton's Hill)					
Reserve Management Plan:	Oruamo Domain, April 1994 Local Amenity Reserves, February 1983					
Entrance	Auckland Council sign	North Shore City sign	Pre-North Shore City sign	Inadequate signage	No signage	Notes
Corner Glenfield Road / High Road (north)		✓				
Corner Glenfield Road / High Road (south)					✓	
High Road Lookout					✓	
Other Notes:	GIS incorrectly calls this reserve "Oruamo Reserve".					

2.112. ORUAMO PLACE ESPLANADE RESERVE, BEACH HAVEN



Park Name (official):	Oruamo Place Esplanade Reserve					
Reserve Management Plan:	No reserve management plan					
Entrance	Auckland Council sign	North Shore City sign	Pre-North Shore City sign	Inadequate signage	No signage	Notes
Foreshore					✓	
Other Notes:						

2.113. PARK RESERVE, GLENFIELD



Park Name (official):	Park Reserve					
Reserve Management Plan:	Eskdale Reserve Network, 1998 Local Amenity Reserves, February 1983					
Entrance	Auckland Council sign	North Shore City sign	Pre-North Shore City sign	Inadequate signage	No signage	Notes
Roberts Road		✓				Sign incorrectly calls reserve "Parks Road Reserve". No mention on the sign of the accessway being called <i>McFarland Lane</i> .
Park Road					✓	No signage for <i>McFarland Lane</i> accessway.
Other Notes:	<i>Park Reserve</i> is part of the <i>Eskdale Reserve Network</i> .					

2.114. PARK HILL RESERVE, BIRKDALE



Park Name (official):	Park Hill Reserve					
Reserve Management Plan:	Local Amenity Reserves, February 1983					
Entrance	Auckland Council sign	North Shore City sign	Pre-North Shore City sign	Inadequate signage	No signage	Notes
Park Hill Road (1)					✓	Grass strip up side of private driveway. See photo below.
Park Hill Road (2)					✓	Grass strip up side of private driveway. See photo below.
Other Notes:						



Park Hill Road eastern entrance – Grass strip up side of private driveway.



Park Hill Road western entrance – Grass strip up side of private driveway.

2.115. PARK HILL SOUTH RESERVE, BIRKDALE



Park Name (official):	Park Hill South Reserve					
Reserve Management Plan:	Local Amenity Reserves, February 1983					
Entrance	Auckland Council sign	North Shore City sign	Pre-North Shore City sign	Inadequate signage	No signage	Notes
Park Hill Road					✓	
Other Notes:	▶ GIS needs to update the name of this reserve from <i>Park Hill Road Reserve</i> to <i>Park Hill South Reserve</i> , as per the management plan.					

2.116. PEMBERTON RESERVE, BAYVIEW

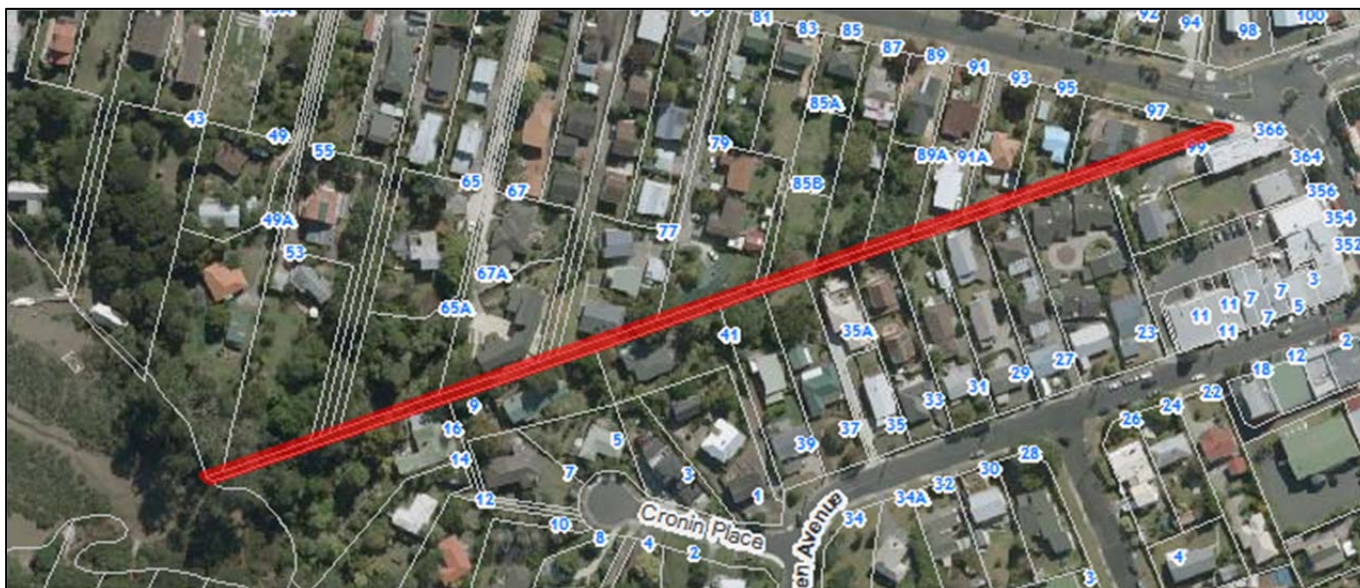


Park Name (official):	Pemberton Reserve					
Reserve Management Plan:	Local Amenity Reserves, February 1983					
Entrance	Auckland Council sign	North Shore City sign	Pre-North Shore City sign	Inadequate signage	No signage	Notes
Pemberton Avenue (1)		✓				
Pemberton Avenue (2)		✓				
Pemberton Avenue (3)					✓	Not an obvious entrance. See photo below.
Other Notes:	Potential for an easement across private property to allow access through to <i>Manuka Neighbourhood Reserve</i> .					



Pemberton Avenue northern entrance – grass and trees between driveways.

2.117. PLANTATION RESERVE, BEACH HAVEN



Park Name (official):	Plantation Reserve					
Reserve Management Plan:	No reserve management plan					
Entrance	Auckland Council sign	North Shore City sign	Pre-North Shore City sign	Inadequate signage	No signage	Notes
Corner Beach Haven Road / Rangatira Road					✓	
Other Notes:	This reserve has been heavily encroached upon by almost all neighbouring properties.					



Cnr Beach Haven Road/Rangatira Road entrance – Blocked by start of hedge. Reserve runs parallel to driveway.

2.118. PORTSEA RESERVE, CHATSWOOD



Park Name (official):	Portsea Reserve					
Reserve Management Plan:	No reserve management plan					
Entrance	Auckland Council sign	North Shore City sign	Pre-North Shore City sign	Inadequate signage	No signage	Notes
Portsea Place					✓	
Chelsea View Drive					✓	
Other Notes:						

2.119. POWRIE RESERVE, GLENFIELD



Park Name (official):	Powrie Reserve					
Reserve Management Plan:	Local Amenity Reserves, February 1983					
Entrance	Auckland Council sign	North Shore City sign	Pre-North Shore City sign	Inadequate signage	No signage	Notes
Powrie Street (1)		✓				
Powrie Street (2)		✓				
Sunward Rise		✓				
Other Notes:	Part of Powrie Street extension is reserve land.					

2.120. RALEIGH ROAD RESERVE, NORTHCOTE



Park Name (official):	Raleigh Road Reserve					
Reserve Management Plan:	No reserve management plan					
Entrance	Auckland Council sign	North Shore City sign	Pre-North Shore City sign	Inadequate signage	No signage	Notes
Raleigh Road			✓			
James Evans Drive				✓		Sign says "Walkway".
Other Notes:						

2.121. RANGATIRA RESERVE, BEACH HAVEN, BIRKDALE



Park Name (official):	Rangatira Reserve					
Reserve Management Plan:	Rangatira Reserve, September 1989					
Entrance	Auckland Council sign	North Shore City sign	Pre-North Shore City sign	Inadequate signage	No signage	Notes
Rangatira Road					✓	
Kia Ora Road (1)					✓	Grass strip between driveways. See photo below.
Kia Ora Road (2)		✓				
Kia Ora Road (3)		✓				
Kia Ora Road (4)		✓				
McGlashen Place		✓				
Kauri Park School					✓	
Gatman Street		✓				
Birkenhead College (1)					✓	
Birkenhead College (2)					✓	

Park Name (official):	Rangatira Reserve					
Reserve Management Plan:	Rangatira Reserve, September 1989					
Entrance	Auckland Council sign	North Shore City sign	Pre-North Shore City sign	Inadequate signage	No signage	Notes
Lysander Crescent (1)					✓	
Lysander Crescent (2)		✓				
Mirage Place		✓				
Taurus Crescent (1)		✓				
Taurus Crescent (2)					✓	
Gemini Place		✓				
Fordham Street					✓	Entrance to two sections of Rangatira Reserve, but no signage.
Lanigan Street (1)					✓	
Lanigan Street (2)					✓	Unformed driveway between private properties. See photo below.
Tiri Tiri Road					✓	
Woodhams Street					✓	

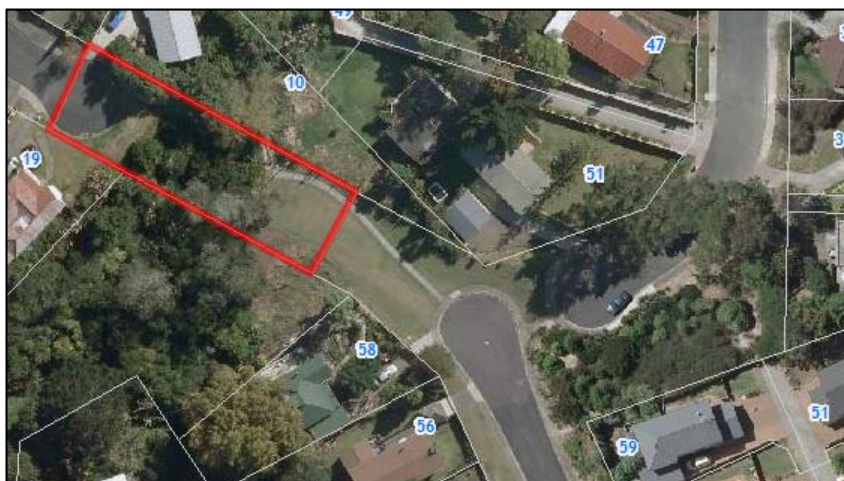
Other Notes:

Rangatira Reserve is comprised of five separate parcels of land across the suburbs of Beach Haven and Birkdale.

9a Mirage Place is included within the boundary on GIS, however this does not appear to be reserve land and is currently for sale on TradeMe.

28 Lanigan Street is part of *Rangatira Reserve*, but is not included within the boundary on GIS.

- ▶ I recommend that the GIS boundary of *Rangatira Reserve* be reviewed, particularly the sites of 9a Mirage Place and 28 Lanigan Street.
- ▶ I recommend that the section of *Rangatira Reserve* that is between Woodhams Street and Tiri Tiri Road be extended to include the rest of the grass portion in the Tiri Tiri Road road-reserve and the planted area at the bottom of Flaxdale Street:



Rangatira Road entrance – Grass strip alongside private driveway.



Kia Ora Road entrance – Grass strip and trees between driveways.



Fordham Street entrance – Grass area and path with no signage.



Lanigan Street southern entrance – unformed driveway between private properties.

2.122. RAWENE ROAD RESERVE, BIRKENHEAD



Park Name (official):	Rawene Road Reserve					
Reserve Management Plan:	No reserve management plan					
Entrance	Auckland Council sign	North Shore City sign	Pre-North Shore City sign	Inadequate signage	No signage	Notes
Mokoia Road					✓	
Rawene Road					✓	
Other Notes:	Rawene Road Council Carpark is part of reserve, but no signage to say this.					

2.123. REWI ALLEY RESERVE, TOTARA VALE



Park Name (official):	Rewi Alley Reserve					
Reserve Management Plan:	Rewi Alley and Trias Reserve, June 1998					
Entrance	Auckland Council sign	North Shore City sign	Pre-North Shore City sign	Inadequate signage	No signage	Notes
Trias Road (1)		✓				Sign on corner of Trias Road / Tetrarch Place.
Trias Road (2)					✓	
Athena Drive		✓				

Entrance	Auckland Council sign	North Shore City sign	Pre-North Shore City sign	Inadequate signage	No signage	Notes
Trias Road Stormwater Quality Pond		✓				<p><i>Trias Road Stormwater Quality Pond</i> has a NSCC sign on Trias Road.</p> <p>No signage at border between <i>Rewi Alley Reserve</i> and <i>Trias Road Stormwater Quality Pond</i>, but there is a NSCC <i>Rewi Alley Reserve</i> sign at path entrance on corner of Athena Drive/Trias Road. However, see notes below on boundary discrepancy.</p>
Other Notes:	<p>This area was formally part of <i>Trias Reserve</i>, but was renamed <i>Rewi Alley Park</i> in 1988. It was gazetted in 1998 with a second name change to <i>Rewi Alley Reserve</i> (although the reserve management plan of the same year still refers to it as <i>Rewi Alley Park</i>).</p> <p>GIS shows the above area being the boundary of <i>Rewi Alley Reserve</i>, however the area gazetted includes the area known as "Trias Road Stormwater Quality Pond" (Lot 410 DP 11755): https://gazette.govt.nz/notice/id/1998-In992</p> <ul style="list-style-type: none"> ► I recommend that the boundary of <i>Rewi Alley Reserve</i> be changed in GIS to include the whole boundary as gazetted, with signage altered to reflect the correct boundary. 					

2.124. RIDGEWOOD RESERVE, BIRKENHEAD



Park Name (official):	Ridgewood Reserve					
Reserve Management Plan:	Local Amenity Reserves, February 1983					
Entrance	Auckland Council sign	North Shore City sign	Pre-North Shore City sign	Inadequate signage	No signage	Notes
Ridgewood Crescent		✓				
Inglis Street (via Verran Road paper road)					✓	
Verran Road (via Verran Road paper road)					✓	
Roseberry Avenue		✓				
Other Notes:						

2.125. ROSECAMP ROAD FORESHORE RESERVE, BEACH HAVEN



Park Name (official):	Rosecamp Road Foreshore Reserve					
Reserve Management Plan:	Foreshore/Esplanade Reserves, 10 October 1989 Rosecamp Road Foreshore Reserve [date unknown]					
Entrance	Auckland Council sign	North Shore City sign	Pre-North Shore City sign	Inadequate signage	No signage	Notes
Rosecamp Road (1)					✓	
Rosecamp Road (2)					✓	
Jacaranda Avenue					✓	
Jacaranda Avenue Esplanade Reserve					✓	
Other Notes:	▶ I recommend that the accessway from Jacaranda Avenue be included as part of <i>Rosecamp Road Foreshore Reserve</i> if it isn't already.					

2.126. ROSS RESERVE, GLENFIELD



Park Name (official):	Ross Reserve					
Reserve Management Plan:	No reserve management plan					
Entrance	Auckland Council sign	North Shore City sign	Pre-North Shore City sign	Inadequate signage	No signage	Notes
Cnr Ross Ave / Hall Road					✓	
Ross Ave					✓	
Hall Road		✓				
Ondine Place		✓				
Other Notes:	Buildings break reserve into two areas. The path at end of the driveway on Ross Ave gives access to the back of the reserve, but not obvious.					

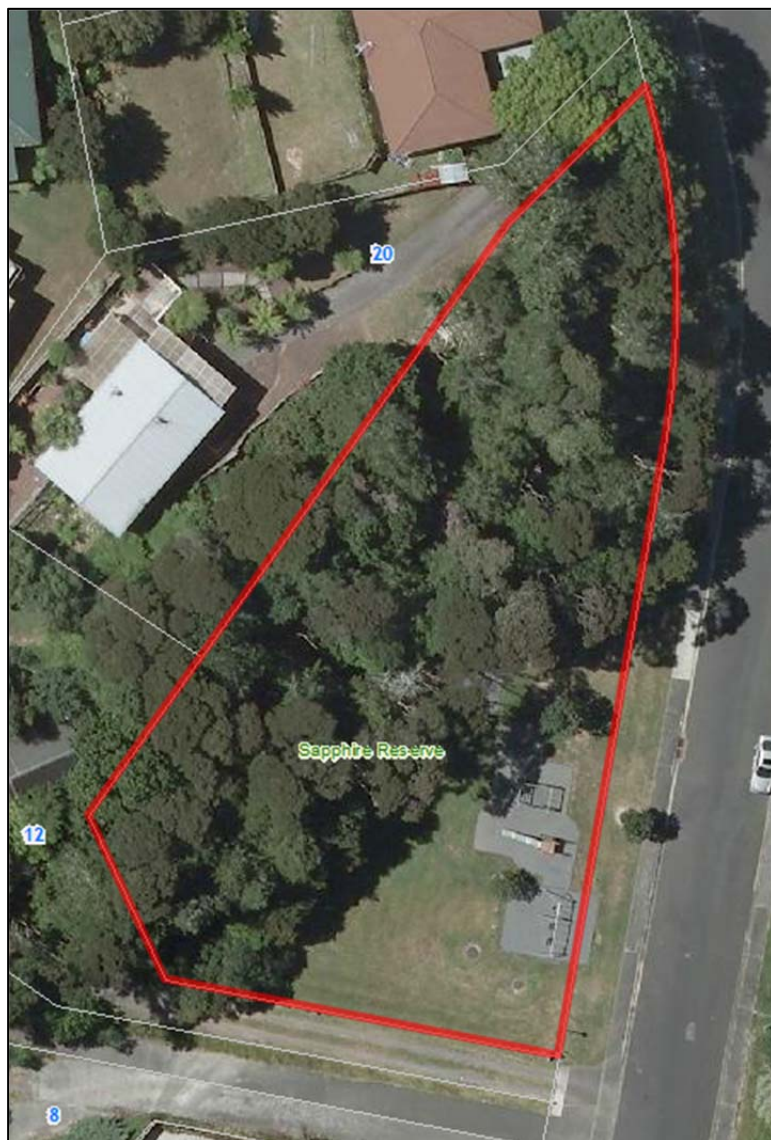
2.127. ROTARY GROVE, NORTHCOTE



Park Name (official):	Rotary Grove					
Reserve Management Plan:	No reserve management plan					
Entrance	Auckland Council sign	North Shore City sign	Pre-North Shore City sign	Inadequate signage	No signage	Notes
Woodside Avenue					✓	
Nutsey Avenue					✓	
Lake Road (Between 20 and 24 Lake Road)					✓	
Lake Road			✓			
Onepoto Domain / Lake Road slip road					✓	
Onepoto Domain / Tennis Courts					✓	
Kororo Street (1)					✓	Driveway appears to be private.
Kororo Street (2)					✓	Scrub between driveways.
ToiToi Place					✓	

Entrance	Auckland Council sign	North Shore City sign	Pre-North Shore City sign	Inadequate signage	No signage	Notes
Onepoto Domain / ToiToi Place					✓	Appears to be part of Onepoto Domain. See recommendation below.
Other Notes:	<p><i>Rotary Grove</i> is comprised of four separate pieces of land, three of which border <i>Onepoto Domain</i>.</p> <ul style="list-style-type: none"> ▶ GIS needs to be updated to reflect the reserve management plan which states that Lot 1 DP 107104 is part of <i>Rotary Grove</i>, not <i>Onepoto Domain</i>. ▶ GIS needs to be updated to reflect the reserve management plan which states that Lot 16 DP 92131 is part of <i>Onepoto Domain</i>, not <i>Rotary Grove</i>. 					

2.128. SAPPHIRE RESERVE, BAYVIEW



Park Name (official):	Sapphire Reserve					
Reserve Management Plan:	Local Amenity Reserves, February 1983					
Entrance	Auckland Council sign	North Shore City sign	Pre-North Shore City sign	Inadequate signage	No signage	Notes
Sapphire Place		✓				
Other Notes:						

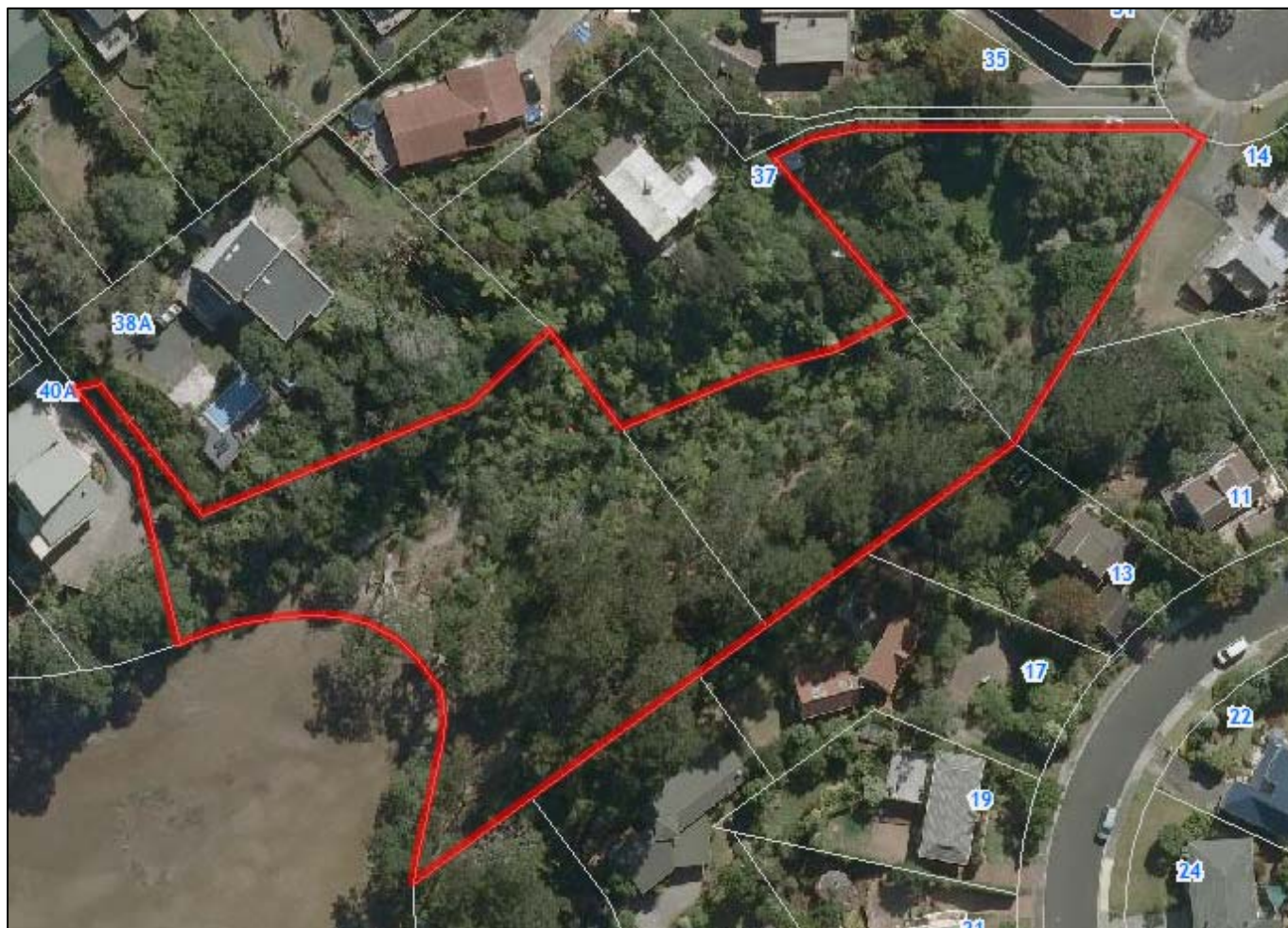
2.129. SHEPHERDS PARK, BEACH HAVEN



Park Name (official):	Shepherds Park					
Reserve Management Plan:	Shepherds Park, 10 October 1989					
Entrance	Auckland Council sign	North Shore City sign	Pre-North Shore City sign	Inadequate signage	No signage	Notes
Beach Haven Road		✓				
John Bracken Way					✓	
Melba Street / John Bracken Way paper road			✓			
Cresta Avenue (North end)		✓				

Entrance	Auckland Council sign	North Shore City sign	Pre-North Shore City sign	Inadequate signage	No signage	Notes
Cresta Avenue (West end)			✓			
Other Notes:	The West end of Cresta Avenue is on reserve land.					

2.130. SISPARA PLACE RESERVE, BEACH HAVEN



Park Name (official):	Sispara Place Reserve					
Reserve Management Plan:	Sispara Place Reserve, September 1989					
Entrance	Auckland Council sign	North Shore City sign	Pre-North Shore City sign	Inadequate signage	No signage	Notes
Sispara Place		✓				
Neptune Avenue					✓	Not an obvious entrance from the road. Access down private driveway, near rear of <i>Neptune Avenue Reserve</i> .
Other Notes:						

2.131. SMITHS BUSH SCENIC RESERVE, NORTHCOTE



Park Name (official):	Smiths Bush Scenic Reserve					
Reserve Management Plan:	Onewa Domain and Smiths Bush Scenic Reserve, May 1993					
Entrance	Auckland Council sign	North Shore City sign	Pre-North Shore City sign	Inadequate signage	No signage	Notes
Onewa Domain		✓				
Akoranga Road					✓	

Entrance	Auckland Council sign	North Shore City sign	Pre-North Shore City sign	Inadequate signage	No signage	Notes
Kitewao Street Esplanade Reserve					✓	
Other Notes:	<p><i>Smiths Bush Scenic Reserve</i> straddles the motorway; only the western side is in the Kaipatiki Local Board area.</p> <p>Originally known as “Mackay’s puriri bush”.</p> <p>Lots 74 and 75 DP 45481 were allocated to Smiths Bush Scenic Reserve in compensation for land taken by the motorway.</p>					

An aerial photograph of a residential neighborhood. A red line outlines a specific area, likely a school district boundary. The area contains numerous houses and trees. A road, labeled 'Valkyria Place', curves through the center. Lots are numbered with blue and white labels. A yellow line is visible on the left side of the map. The bottom right corner shows a body of water.



Park Name (official):	Soldiers Bay Reserve					
Reserve Management Plan:	Foreshore/Esplanade Reserves, 10 October 1989					
Entrance	Auckland Council sign	North Shore City sign	Pre-North Shore City sign	Inadequate signage	No signage	Notes
Island Bay Road				✓		Pre-NSCC sign says "Access to Soldiers Bay". NSCC sign says "Not an official walkway. Use at own risk".
Valkyria Place			✓			Sign incorrectly reads "Fred Anderson Reserve Beach Access".
Fred Anderson Reserve					✓	
Other Notes:	<p><i>Soldiers Bay Reserve</i> is comprised of two areas. One is accessed from Valkyria Place and is incorrectly identified in GIS as part of <i>Fred Anderson Reserve</i>; the other is accessed from Island Bay Road.</p> <p>Signage on Island Bay Road entrance indicates this is not an official walkway, yet this is part of an official reserve, so the walkway should be maintained properly.</p> <p>GIS is incorrectly including most of <i>Soldiers Bay Reserve</i> within the boundary of <i>Fred Anderson Reserve</i>, and is incorrectly calling the remainder of the reserve <i>Soldiers Bay Accessway</i>. In the above map, the area north of the yellow line is <i>Fred Anderson Reserve</i>; south of the line is <i>Soldiers Bay Reserve</i>.</p> <ul style="list-style-type: none"> ► I recommend that GIS and signage for <i>Fred Anderson Reserve</i> and <i>Soldiers Bay Reserve</i> is updated to reflect the boundaries in the reserve management plan. 					

2.133. SPINELLA RESERVE, BAYVIEW



Park Name (official):	Spinella Reserve					
Reserve Management Plan:	Spinella and Bonito Reserves, June 1997 Local Amenity Reserves, February 1983					
Entrance	Auckland Council sign	North Shore City sign	Pre-North Shore City sign	Inadequate signage	No signage	Notes
Spinella Drive		✓				
Bonito Scenic Reserve					✓	
Other Notes:						

2.134. STAFFORD PARK, NORTHCOTE POINT



Park Name (official):	Stafford Park					
Reserve Management Plan:	No reserve management plan					
Entrance	Auckland Council sign	North Shore City sign	Pre-North Shore City sign	Inadequate signage	No signage	Notes
Corner Stafford Road / Denby Lane		✓				
Denby Lane (1)					✓	
Denby Lane (2)					✓	
Denby Lane (3)					✓	
Richmond Avenue					✓	
Belle Vue Avenue					✓	
Waimana Avenue			✓			
Other Notes:						

2.135. STANAWAY RESERVE, HILLCREST



Park Name (official):	Stanaway Reserve					
Reserve Management Plan:	No reserve management plan					
Entrance	Auckland Council sign	North Shore City sign	Pre-North Shore City sign	Inadequate signage	No signage	Notes
Stanaway Street					✓	
Sylvia Road					✓	
Other Notes:						

2.136. STANCICH RESERVE, HILLCREST



Park Name (official):	Stancich Reserve					
Reserve Management Plan:	Stancich Reserve, October 2000					
Entrance	Auckland Council sign	North Shore City sign	Pre-North Shore City sign	Inadequate signage	No signage	Notes
Ocean View Road		✓				
Hillcrest Avenue		✓				
Uppingham Crescent (1)					✓	
Uppingham Crescent (2)		✓				
Uppingham Crescent (3)		✓				
Eban Avenue					✓	Entrance not obvious. See photo below.
Other Notes:						



Eban Avenue entrance – Grass strip between letterbox post and lamppost.

2.137. STANDISH RESERVE, BAYVIEW



Park Name (official):	Standish Reserve					
Reserve Management Plan:	No reserve management plan					
Entrance	Auckland Council sign	North Shore City sign	Pre-North Shore City sign	Inadequate signage	No signage	Notes
Pemberton Avenue					✓	
Kaipatiki Esplanade Reserve					✓	
Other Notes:						

2.138. STOKES POINT / TE ONEWA RESERVE, NORTHCOTE POINT



Park Name (official):	Stokes Point / Te Onewa Reserve					
Reserve Management Plan:	Stokes Point / Te Onewa, November 2005					
Entrance	Auckland Council sign	North Shore City sign	Pre-North Shore City sign	Inadequate signage	No signage	Notes
Queen Street					✓	
Princes Street						
Other Notes:	<p><i>Stokes Pt / Te Onewa Reserve</i> stretches under the motorway and includes a second parcel of land to the north. It also includes the land under part of Northcote Wharf and the privately owned "The Wharf" building. The area to the north is only accessible via the foreshore. The area was formally known as <i>Point Rough</i>.</p> <ul style="list-style-type: none"> ▶ The reserve name in GIS needs to be updated from "Stokes Pt / Northcote Reserve" to "Stokes Point / Te Onewa Reserve". ▶ The parcel of land under part of Northcote Wharf and the privately owned "The Wharf" building is not included in the <i>Stokes Pt / Te Onewa Reserve</i> management plan and should perhaps be part of <i>Fishermans Wharf</i> reserve. 					

2.139. SULPHUR BEACH RESERVE, NORTHCOTE POINT



Park Name (official):	Sulphur Beach Reserve					
Reserve Management Plan:	No reserve management plan					
Entrance	Auckland Council sign	North Shore City sign	Pre-North Shore City sign	Inadequate signage	No signage	Notes
Sulphur Beach Road					✓	No signage at change from legal road to reserve (approx. 16 Sulphur Beach Road).
Beach Road					✓	Beach Road leads directly onto <i>Sulphur Beach Reserve</i> .
Other Notes:	<p><i>Sulphur Beach Reserve</i> is comprised of four separate pieces of land, which straddle the motorway and include most of Sulphur Beach Road.</p> <p>The portion of reserve land at 2 Sulphur Beach Road is owned by WaterCare.</p>					

2.140. SUNNYBRAE GREEN, HILLCREST



Park Name (official):	Sunnybrae Green					
Reserve Management Plan:	Local Amenity Reserves, February 1983					
Entrance	Auckland Council sign	North Shore City sign	Pre-North Shore City sign	Inadequate signage	No signage	Notes
Sunnybrae Road					✓	
Other Notes:						

2.141. SUNNYHAVEN AVENUE RESERVE, BEACH HAVEN



Park Name (official):	Sunnyhaven Avenue Reserve					
Reserve Management Plan:	No reserve management plan					
Entrance	Auckland Council sign	North Shore City sign	Pre-North Shore City sign	Inadequate signage	No signage	Notes
Aeroview Drive					✓	
Sunnyhaven Avenue					✓	
Other Notes:						

2.142. TAMAHERE RESERVE, GLENFIELD



Park Name (official):	Tamahere Reserve					
Reserve Management Plan:	Local Amenity Reserves, February 1983					
Entrance	Auckland Council sign	North Shore City sign	Pre-North Shore City sign	Inadequate signage	No signage	Notes
Tamahere Drive		✓				Includes access to Windy Ridge Playcentre.
Seaview Road					✓	
Redfern Lane		✓				

Entrance	Auckland Council sign	North Shore City sign	Pre-North Shore City sign	Inadequate signage	No signage	Notes
Lot 77 DP 429093					✓	
Other Notes:	▶ Lot 77 DP 429093 is in the gazetting process and I recommend that it become part of <i>Tamahere Reserve</i> .					



Seaview Road entrance – Line of trees between letterbox and private fence.

2.143. TARGET RESERVE, TOTARA VALE



Park Name (official):	Target Reserve					
Reserve Management Plan:	Local Amenity Reserves, February 1983					
Entrance	Auckland Council sign	North Shore City sign	Pre-North Shore City sign	Inadequate signage	No signage	Notes
Target Road (photo)					✓	Via shared driveway. See photo below.
Tawavale Crescent					✓	
Romulus Place				✓		Sign reads "To Tawavale Crescent; To Target Road Primary"
Other Notes:	<p>This reserve appears to be part of the Target School as there are no borders nor signs.</p> <p>The main entrance from Target Road is from what appears to be a shared driveway, although there is a street sign pointing down the driveway which reads "Cedar Grove". There is no Cedar Grove listed in GIS.</p>					



Target Road entrance - down driveway to left. Reserve is behind foliage. Note the “Cedar Grove” sign.

2.144. TAURUS CRESCENT RESERVE, BEACH HAVEN



Park Name (official):	Taurus Crescent Reserve					
Reserve Management Plan:	No reserve management plan					
Entrance	Auckland Council sign	North Shore City sign	Pre-North Shore City sign	Inadequate signage	No signage	Notes
Taurus Crescent					✓	
Other Notes:						

2.145. TELEPHONE ROAD, BIRKENHEAD



Park Name (official):	Telephone Road					
Reserve Management Plan:	No reserve management plan					
Entrance	Auckland Council sign	North Shore City sign	Pre-North Shore City sign	Inadequate signage	No signage	Notes
Chelsea Estate Heritage Park					✓	
Inkster Street					✓	
Telephone Road						
Pullum Street					✓	

Entrance	Auckland Council sign	North Shore City sign	Pre-North Shore City sign	Inadequate signage	No signage	Notes
Palmerston Road					✓	Entrance not obvious as private driveway and grass strip.
Other Notes:	<p>Much of the open grass area near Chelsea Bay beach is on private land. Land has been encroached upon, particularly by 25 Inkster Street. Gate to be installed at SW corner as part of Dog Access Hearing recommendations.</p>					



Palmerston Road entrance – driveway, letterboxes and part of grass area on reserve.

2.146. TENBLESS RESERVE, TOTARA VALE



Park Name (official):	Tenbless Reserve					
Reserve Management Plan:	No reserve management plan					
Entrance	Auckland Council sign	North Shore City sign	Pre-North Shore City sign	Inadequate signage	No signage	Notes
Tenbless Court					✓	
Thornbill Rise (not in Kaipatiki Local Board area)					✓	
Other Notes:	Orange line marks northern boundary of Kaipatiki Local Board area.					

2.147. TEVIOT RESERVE, TOTARA VALE



Park Name (official):	Teviot Reserve					
Reserve Management Plan:	Local Amenity Reserves, February 1983					
Entrance	Auckland Council sign	North Shore City sign	Pre-North Shore City sign	Inadequate signage	No signage	Notes
Teviot Place					✓	Sign removed 2008/09.
Ayton Drive					✓	
Other Notes:						

2.148. TOTARAVALE EAST RESERVE, TOTARA VALE



Park Name (official):	Tataravale East Reserve					
Reserve Management Plan:	Local Amenity Reserves, February 1983					
Entrance	Auckland Council sign	North Shore City sign	Pre-North Shore City sign	Inadequate signage	No signage	Notes
Tataravale Drive					✓	
Other Notes:	<p>Reserve named after road (one word), not suburb (two words). Reserve includes Early Learning Centre site.</p> <ul style="list-style-type: none"> ▶ The name of the reserve needs to be updated in GIS from "Tataravale Reserve" to "Tataravale East Reserve", as per the reserve management plan. 					

2.149. TREE VIEW RESERVE, GLENFIELD



Park Name (official):	Tree View Reserve					
Reserve Management Plan:	Eskdale Reserve Network, 1998					
Entrance	Auckland Council sign	North Shore City sign	Pre-North Shore City sign	Inadequate signage	No signage	Notes
Tree View Avenue		✓				Sign incorrectly calls reserve "Treeview Reserve".
Lauderdale Reserve					✓	
Eskdale Reserve					✓	
Other Notes:	Tree View Reserve is part of the Eskdale Reserve Network.					

2.150. TRELAWNY RESERVE, HILLCREST



Park Name (official):	Trelawny Reserve					
Reserve Management Plan:	Local Amenity Reserves, February 1983					
Entrance	Auckland Council sign	North Shore City sign	Pre-North Shore City sign	Inadequate signage	No signage	Notes
Corner Trelawny Place / Menear Place					✓	
Trelawny Place (northern)					✓	
Trelawny Place (southern)					✓	
Tranquil Glade					✓	Entrance not obvious. See photo below.
Other Notes:	Reserve is comprised of five sections straddling Trelawny Place, none of which have signage					



Tranquil Glade entrance – grass area between driveways.

2.151. TRIAS RESERVE, TOTARA VALE



Park Name (official):	Trias Reserve					
Reserve Management Plan:	Rewi Alley and Trias Reserve, June 1998					
Entrance	Auckland Council sign	North Shore City sign	Pre-North Shore City sign	Inadequate signage	No signage	Notes
Trias Road					✓	
Romulus Place					✓	Pole with no sign.
Other Notes:	Trias Reserve used to include the area now called Rewi Alley Reserve.					

2.152. TUI PARK, BEACH HAVEN



Park Name (official):	Tui Park					
Reserve Management Plan:	Tui Park, September 1989					
Entrance	Auckland Council sign	North Shore City sign	Pre-North Shore City sign	Inadequate signage	No signage	Notes
Rambler Crescent		✓				
Gazelle Avenue					✓	
Other Notes:						

2.153. TUFF CRATER, NORTHCOTE



Park Name (official):	Tuff Crater					
Reserve Management Plan:	Tuff Crater, February 1983					
Entrance	Auckland Council sign	North Shore City sign	Pre-North Shore City sign	Inadequate signage	No signage	Notes
Akoranga Drive		✓				
Warehouse Way					✓	
Warehouse Way roundabout				✓		Small directional sign on lamppost instead of entrance sign.

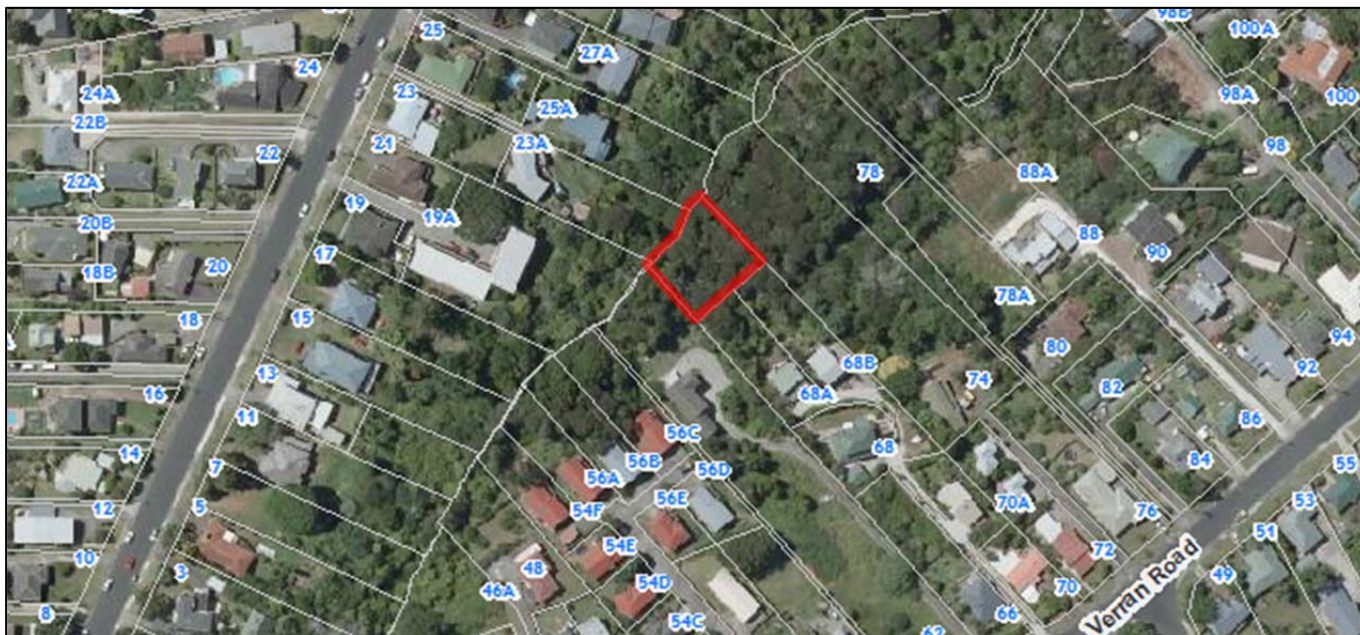
Entrance	Auckland Council sign	North Shore City sign	Pre-North Shore City sign	Inadequate signage	No signage	Notes
St Peters Street		✓				
Arahia Street		✓				
Heath Reserve				✓		Sign about restoration, but not entrance sign.
Other Notes:						

2.154. VANDELEUR RESERVE, BIRKDALE



Park Name (official):	Vandeleur Reserve					
Reserve Management Plan:	Local Amenity Reserves, February 1983					
Entrance	Auckland Council sign	North Shore City sign	Pre-North Shore City sign	Inadequate signage	No signage	Notes
Vandeleur Avenue		✓				
Verbena Road					✓	
Other Notes:	<ul style="list-style-type: none"> ▶ The boundary of the reserve needs to be updated in GIS to include the track from Verbena Road, as per the reserve management plan. 					

2.155. VERRAN ROAD ESPLANADE RESERVE, BIRKENHEAD



Park Name (official):	Verran Road Esplanade Reserve					
Reserve Management Plan:	No reserve management plan					
Entrance	Auckland Council sign	North Shore City sign	Pre-North Shore City sign	Inadequate signage	No signage	Notes
N/A					✓	
Other Notes:	No public access to this reserve.					

2.156. VERRAN ROAD GULLY RESERVE, BIRKENHEAD

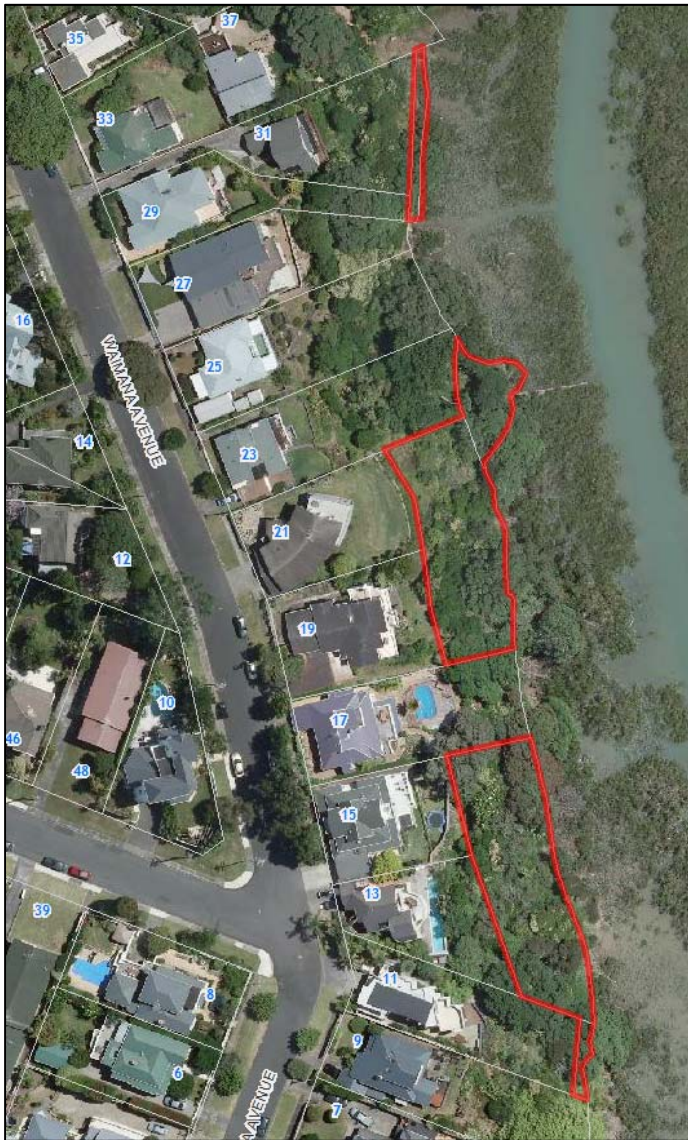


Park Name (official):	Verran Road Gully Reserve					
Reserve Management Plan:	No reserve management plan					
Entrance	Auckland Council sign	North Shore City sign	Pre-North Shore City sign	Inadequate signage	No signage	Notes
Verran Road / Roseberry Avenue paper road					✓	
Roseberry Avenue					✓	
Caram Place					✓	Driveway to wastewater facility. See photo below.
Other Notes:						



Caram Place entrance – Driveway to wastewater facility appears to be private property.

2.157. WAIMANA AVENUE FORESHORE, NORTHCOTE POINT



Park Name (official):	Waimana Avenue Foreshore					
Reserve Management Plan:	No reserve management plan					
Entrance	Auckland Council sign	North Shore City sign	Pre-North Shore City sign	Inadequate signage	No signage	Notes
Foreshore					✓	
Other Notes:	Waimana Avenue Foreshore is comprised of three separate pieces of land, all of which are only accessible via the foreshore or private property.					

2.158. WANITA RESERVE, TOTARA VALE



Park Name (official):	Wanita Reserve					
Reserve Management Plan:	Local Amenity Reserves, February 1983					
Entrance	Auckland Council sign	North Shore City sign	Pre-North Shore City sign	Inadequate signage	No signage	Notes
Wanita Place					✓	
Jenanne Place					✓	
Julia Place					✓	
Other Notes:						

2.159. WINDY RIDGE RESERVE, GLENFIELD



Park Name (official):	Windy Ridge Reserve					
Reserve Management Plan:	Local Amenity Reserves, February 1983					
Entrance	Auckland Council sign	North Shore City sign	Pre-North Shore City sign	Inadequate signage	No signage	Notes
Corner Seaview Road / Valley View Road		✓				
Windy Ridge Road					✓	
Other Notes:						

2.160. WITHEFORD SCENIC RESERVE, BAYVIEW



Park Name (official):	Witheford Scenic Reserve					
Reserve Management Plan:	Local Amenity Reserves, February 1983					
Entrance	Auckland Council sign	North Shore City sign	Pre-North Shore City sign	Inadequate signage	No signage	Notes
Corner Witheford Drive / Fernlea Rise		✓				Sign says "Witheford Reserve".
Witheford Drive (2)					✓	
Valecrest Place		✓				Sign says "Witheford Reserve".
Noeleen Street (1)					✓	Between 51-53 Noeleen Street.

Entrance	Auckland Council sign	North Shore City sign	Pre-North Shore City sign	Inadequate signage	No signage	Notes
Noeleen Street (2)					✓	Northern side.
Noeleen Street (3)					✓	Southern side.
Noeleen Street extension					✓	Between 44-46 Noeleen Street.
Manuka Road					✓	Not obvious entrance as up private driveway.
Corner Kaipatiki Road / Easton Park Parade		✓				
Kaipatiki Road		✓				Signage for restoration project.
Kaipatiki Esplanade Reserve					✓	
Other Notes:	<i>Witheford Scenic Reserve</i> is comprised of two parcels of land which straddle Noeleen Street.					

2.161. WOODCOTE SCENIC RESERVE, GLENFIELD



Park Name (official):	Woodcote Scenic Reserve					
Reserve Management Plan:	Local Amenity Reserves, February 1983					
Entrance	Auckland Council sign	North Shore City sign	Pre-North Shore City sign	Inadequate signage	No signage	Notes
Woodcote Drive		✓				Sign incorrectly calls the reserve "Woodcote Reserve".
Other Notes:	Greenvalley Accessway may have originally intended to link to Woodcote Scenic Reserve, but it doesn't quite get there, instead ending at private property.					

2.162. ZION HILL RESERVE, BIRKENHEAD



Park Name (official):	Zion Hill Reserve					
Reserve Management Plan:	No reserve management plan					
Entrance	Auckland Council sign	North Shore City sign	Pre-North Shore City sign	Inadequate signage	No signage	Notes
Birkenhead Avenue					✓	
Corner Birkenhead Avenue / Highbury Bypass					✓	
Other Notes:	Driveway to north of reserve is private land and not vehicle access to reserve.					

3. UNIDENTIFIED RESERVES

The following areas are designated as reserve land in GIS but I haven't been able to identify the names of the reserves:

- Foreshore of 13a Beach Haven Road; possibly part of *Hilders Park*.
- Lot 66 DP 103797 on intersection of Hadfield Street and Poaka Place.
- Lot 67 DP 103797 at the end of Mariners View Road extension (private road?).
- 19 Monte Casino Place.